

# AGENDA

**Meeting:** South West Wiltshire Area Board  
**Place:** Nadder Centre, Weaveland Road, Tisbury, SP3 6HJ  
**Date:** Wednesday 7 February 2018  
**Time:** 6.30 pm

---

Including the Parishes of Alvediston, Ansty, Barford St. Martin, Berwick St John, Berwick St Leonard, Bishopstone, Bowerchalke, Broad Chalke, Burcombe Without, Chicklade, Chilmark, Compton Chamberlayne, Dinton, Donhead St Andrew, Donhead St Mary, East Knoyle, Ebbesbourne Wake, Fonthill Bishop, Fonthill Gifford, Fovant, Hindon, Kilmington, Mere, Netherhampton, Quidhampton, Sedgehill and Semley, South Newton, Stourton with Gasper, Stratford Toney, Sutton Mandeville, Swallowcliffe, Teffont, Tisbury, Tollard Royal, West Knoyle, West Tisbury, Wilton and Zeals.

---

**The Area Board welcomes and invites contributions from members of the public. The chairman will try to ensure that everyone who wishes to speak will have the opportunity to do so.**

If you have any requirements that would make your attendance at the meeting easier, please contact your Democratic Services Officer.

**Refreshments and networking opportunity from 6:00pm .**

---

Please direct any enquiries on this Agenda to Lisa Moore (Democratic Services Officer), direct line 01722 434560 or email [lisa.moore@wiltshire.gov.uk](mailto:lisa.moore@wiltshire.gov.uk)

All the papers connected with this meeting are available on the Council's website at [www.wiltshire.gov.uk](http://www.wiltshire.gov.uk)

Press enquiries to Communications on direct lines (01225) 713114 / 713115.

---

## Wiltshire Councillors

Cllr Jose Green, Fovant and Chalke Valley (Chairman)  
Cllr Pauline Church, Wilton and Lower Wylde Valley (Vice-Chairman)  
Cllr George Jeans, Mere  
Cllr Tony Deane, Tisbury  
Cllr Bridget Wayman, Nadder and East Knoyle

## **RECORDING AND BROADCASTING NOTIFICATION**

Wiltshire Council may record this meeting for live and/or subsequent broadcast on the Council's website at <http://www.wiltshire.public-i.tv>. At the start of the meeting, the Chairman will confirm if all or part of the meeting is being recorded. The images and sound recordings may also be used for training purposes within the Council.

By entering the meeting room you are consenting to being recorded and to the use of those images and recordings for broadcasting and/or training purposes.

The meeting may also be recorded by the press or members of the public.

Any person or organisation choosing to film, record or broadcast any meeting of the Council, its Cabinet or committees is responsible for any claims or other liability resulting from them so doing and by choosing to film, record or broadcast proceedings they accept that they are required to indemnify the Council, its members and officers in relation to any such claims or liabilities.

Details of the Council's Guidance on the Recording and Webcasting of Meetings is available on request.

### **Parking**

To find car parks by area follow [this link](#). The three Wiltshire Council Hubs where most meetings will be held are as follows:

**County Hall, Trowbridge**  
**Bourne Hill, Salisbury**  
**Monkton Park, Chippenham**

County Hall and Monkton Park have some limited visitor parking. Please note for meetings at County Hall you will need to log your car's registration details upon your arrival in reception using the tablet provided. If you may be attending a meeting for more than 2 hours, please provide your registration details to the Democratic Services Officer, who will arrange for your stay to be extended.

### **Public Participation**

Please see the agenda list on following pages for details of deadlines for submission of questions and statements for this meeting.

For extended details on meeting procedure, submission and scope of questions and other matters, please consult [Part 4 of the council's constitution](#).

The full constitution can be found at [this link](#).

For assistance on these and other matters please contact the officer named above for details

	<b>Items to be considered</b>	<b>Time</b>
1	<b>Welcome and Introductions</b>	6.30pm
2	<b>Apologies for Absence</b>	
3	<b>Declarations of Interest</b>  To receive any declarations of disclosable interests or dispensations granted by the Standards Committee.	
4	<b>Minutes (Pages 1 - 8)</b>  To confirm as a correct record and sign the minutes of the previous meeting held on Wednesday December 6 <sup>th</sup> , 2017.  To note any matters arising from the minutes of the last meeting.	
5	<b>Chairman's Announcements</b>	6.35pm
6	<b>CH4LKE Mobile - Bringing Super Fast Broadband and 4G Mobile Coverage to the Chalke Valley</b>  James Body will give a presentation about this initiative, with the opportunity for the audience to ask questions afterwards.	6.40pm
7	<b>Clean Up Wilts / The Great British Spring Clean 2018 (Pages 9 - 10)</b>  Presentation on how local communities can get involved and make 2018 the year we Clean up Wilts.  <i>Officer: Steve Harris, CEM</i>	7.15pm
8	<b>Wiltshire Local Plan Review - Consultation Responses</b>  Discussion to explore concerns raised by some parishes within the area.	7.25pm
9	<b>Partner and Community Updates (Pages 11 - 54)</b>  To receive any verbal updates from Partners and Community Groups present, including: <ul style="list-style-type: none"> <li>• Police – Neighbourhood Teams</li> <li>• Fire &amp; Rescue</li> </ul>	7.40pm

To note the following written updates attached to the agenda:

- a) Police
- b) Fire
- c) JSA Update
- d) Wilton Town Team minutes
- e) Clinical Commissioning Group Updates
- f) Healthwatch Wiltshire Update
- g) Health & Wellbeing Champions Update
- h) Office of the Police and Crime Commissioner – Precept consultation.
- i) Wiltshire Council Items for Information:
  - o Supporting those with SEND into employment
  - o Public Space Protection Orders
  - o Work Wiltshire

To note the information on current consultations, to take part and for further information, visit the consultation portal:

<http://www.wiltshire.gov.uk/council/consultations.htm>

*Note: Speakers are reminded that they each have a 3 minutes slot, unless they have previously discussed alternative arrangements with the Community Area Manager.*

10      **Community Area Transport Group (CATG) Update**      **8.10pm**  
(Pages 55 - 70)

To receive an update from the Chairman of the group; Councillor Tony Deane, and to consider any recommendations for funding arising from the last CATG meeting.

- Local Highways Investment Scheme

Also to consider the attached information on:

- Major maintenance 2018/19 proposed schemes.
- Pavement and footway improvement scheme – proposed local sites.

11      **Nadder Centre**      **8.15pm**

To receive an update on the progress of the Campus since the last meeting.

12 **Area Board Funding** (Pages 71 - 76)

8.20pm

Community Area Grants

The Board members will consider 3 applications for funding from the Community Area Grants Scheme, as detailed in the attached report and listed below:

<b>Applicant</b>	<b>Amount requested</b>
<b>Applicant:</b> Quidhampton Village Hall Committee <b>Project Title:</b> Quidhampton Village Hall Roof Repairs and Damp-Proofing  <a href="#">View full application</a>	£1200.00
<b>Applicant:</b> Tisbury and District Community Minibus Limited <b>Project Title:</b> Move TISBUS to the Nadder Campus  <a href="#">View full application</a>	£280.00
<b>Applicant:</b> Cranborne Chase Area of Outstanding Natural Beauty <b>Project Title:</b> Access development - Volunteer facilitation fund  <a href="#">View full application</a>	£750.00

To consider one Youth Funding Project request, as detailed in the agenda pack and listed below:

<b>Application</b>	<b>Grant Amount</b>
<b>Applicant:</b> Seeds 4 Success <b>Project Title:</b> Friday Night Drop-Ins	£5000.00
<b>Total grant amount requested at this meeting</b>	£5000.00
<b>Total amount allocated so far</b>	£5872.00

13 **Close**

8.30pm

The next meeting of the Board is on Wednesday 21 March, at 6.30pm.



# MINUTES

**Meeting:** SOUTH WEST WILTSHIRE AREA BOARD  
**Place:** Nadder Centre, Weaveland Road, Tisbury, SP3 6HJ  
**Date:** 6 December 2017  
**Start Time:** 6.30 pm  
**Finish Time:** 8.57 pm

---

Please direct any enquiries on these minutes to:

Lisa Moore (Democratic Services Officer), Tel: 01722 434560 or (e-mail) [lisa.moore@wiltshire.gov.uk](mailto:lisa.moore@wiltshire.gov.uk)

Papers available on the Council's website at [www.wiltshire.gov.uk](http://www.wiltshire.gov.uk)

---

## **In Attendance:**

### **Wiltshire Councillors**

Cllr Jose Green (Chairman), Cllr Pauline Church (Vice-Chairman), Cllr George Jeans, Cllr Tony Deane and Cllr Bridget Wayman

### **Wiltshire Council Officers**

Stephen Harris, Community Engagement Manager  
Lisa Moore, Democratic Services Officer  
Karen Spence, Public Health Specialist

### **Town and Parish Councillors**

Bowerchalke PC – J Body  
Bishopstone PC – M Ash  
Dinton PC – C Smith  
Hindon PC – D Robertson  
Mere Town Council – J Jordan  
Quidhampton PC – K Taylor  
Swallowcliffe PC – S Banas  
Sutton Mandeville PC – J Childs

### **Partners**

Wiltshire Police - Inspector Pete Sparrow & John Hutchings  
Wiltshire Fire and Rescue Service – James Toomey

**Total in attendance: 25**

<u>Agenda Item No.</u>	<u>Summary of Issues Discussed and Decision</u>
51	<p><u>Welcome and Introductions</u></p> <p>The Chairman, Councillor Jose Green welcomed everyone to the meeting of the South West Wiltshire Area Board.</p>
52	<p><u>Apologies for Absence</u></p> <p>Apologies for absence were received from:</p> <ul style="list-style-type: none"> <li>• Clare Churchill – Clerk to Dinton, Donhead St Mary, Burcombe, Fovant, Berwick St John, &amp; Quidhampton parish councils.</li> </ul>
53	<p><u>Declarations of Interest</u></p> <p>There were none.</p>
54	<p><u>Minutes</u></p> <p>The minutes of the previous meeting held on Wednesday 11 October 2017, were agreed a correct record and signed by the Chairman.</p>
55	<p><u>Chairman's Announcements</u></p> <p>The Chairman made the following announcements:</p> <ul style="list-style-type: none"> <li>• The Local Plan Review consultation was open online and public meetings were also being held.</li> <li>• Healthy Schools Programme – being aware of the health and wellbeing of pupils in Wiltshire. 131 schools across Wiltshire were taking part, with 77 schools already awarded a special plaque, Broadchalke had received a gold level award.</li> <li>• From 4<sup>th</sup> January 2018, the Tisbury Library would increase its opening hours to include Thursday mornings.</li> <li>• The AONB had a landscaping partnership scheme, and were organising some exciting events and projects ahead.</li> <li>• There were 24 grit machines up and running across the county, spreading salt.</li> <li>• Future area board items would include issues around rural mobile phone signal and broadband, and affordable housing.</li> <li>• On 16 December the Nadder Centre would hold its first film showing, it would be the movie Home Alone.</li> <li>• The Christmas party would be held at the Nadder Centre on 22</li> </ul>



	December.
56	<p><u>Mental Health Awareness Workshop</u></p> <p>Karen Spence, Public Health Specialist delivered an interactive session focusing on how to maintain and improve positive mental health and wellbeing.</p> <p>A copy of the slides from the workshop are attached to the end of these minutes for info.</p> <p>The Public Health Team are looking at the health of the population and are working on helping people to stay well, with a focus on changing the way Mental Health is thought about.</p> <p>Karen ran a workshop exercise to explore different reasons for stress and the various coping mechanisms to deal with stress.</p>
57	<p><u>Partner and Community Updates</u></p> <p>The Board noted the written updates attached to the agenda and circulated at the meeting. The following verbal updates were received:</p> <p><u>Police – Inspector Pete Sparrow &amp; John Hutchings</u></p> <p>A written report was circulated at the meeting.</p> <ul style="list-style-type: none"> <li>• The Salisbury Officers had been set a challenge to be as visible as possible, as so many times people say that Police Officers are nowhere to be seen. The challenge Pete set his Officers was, who could be the most visible this month? For short 20 minute bursts, all officers available would be out on the streets for all to see.</li> <li>• On Monday Officers went to Wilton, with 7 patrolling the shopping village. This made a visible statement. We are out there and we do care. This action acts as a deterrent.</li> <li>• We do lots to tackle crime and we still live in a very safe area.</li> <li>• On target for response times for the Wilton area.</li> <li>• This time of the year is the peak time for rural crime, such as hare coursing. We need the community to report incidents.</li> </ul> <p>Questions:</p> <ul style="list-style-type: none"> <li>• Q – why was rural poaching your number one crime? <u>Answer:</u> The old traditional image of one for the pot is far off the mark. Rural offences taking place now were not purely people poaching for their own pot, there were</li> </ul>

huge gambling implications with competitions to see who could catch the most. It was a profit-making act. Associated offences create the need for us to tackle this.

Fire – James Toomey, Station Commander at Wilton.

- The Fire Service had started a 'Be one of us' campaign to increase the numbers of Officers from other areas of the community.
- We attend other incidents in bigger areas, which are not included in these statistics for our community area.
- We need help to recruit more Officers to be trained. We have had very little success in attracting new recruits.
- Promoting Safe and Well visits.

Questions:

- Q – The number of false alarms was quite alarming, why was it so high?  
Answer: We don't get too many, these can be caused by burnt toast setting the domestic alarm off and some building alarms going off faulty.
- Q – It was good to see in Wilton that the daytime figures had increased, but Tisbury's daytime cover was still low. Answer: Tisbury did not have enough people available through the day. They were desperate for people. Lots of employers did not have spare staff and could not release their staff to provide cover. In Wilton we rely on shift workers and the self-employed.
- Q – The Fire service was looking at a new pay structure which may increase interest. – Answer: Wilton was one of the first to go on the pilot scheme, working on salary scheme instead of the old way of pay as you go. This had been very successful there.
- Q – The Co-responding service in Mere was useful, but we should be given the code to access the defibrillators rather than have to call up for it. Answer: – The Wilton station no longer Co-responded. It was trialled, but found that we were chasing the ambulance all of the time. Wilton's defibrillator had a different system where they do not have to wait for a code.
- Q – In Swallowcliff the users of the defibrillator service were told that the ambulance service would not release the code out to anyone over 500m away from the box. So they had put the code on the box.

**Action: CEM to liaise with the Board Members discuss the various issues around the different defibrillator systems in use across the community areas, to see if any action was required.**

	<p>Wilton Update – On 1<sup>st</sup> Jan the first draft of the Atkins Study for Wilton Parkway would be available.</p>
58	<p><u>Community Area Transport Group (CATG) Update</u></p> <p>The Board noted the written report attached to the agenda and considered the recommendations listed in the table.</p> <p>The Substantive bid for the A30 Brook Hill, Donhead St Andrew, was not awarded funding at this time. Further bids could be put forward next year.</p> <p><b><u>Decision</u></b>  <b>The South West Wiltshire Area Board approved £1,500 of CATG funding towards the Swallowcliffe 20mph feasibility study.</b></p>
59	<p><u>The Nadder Centre</u></p> <p>The Board received an update from Cllr Deane on the progress of the Campus since the last meeting.</p> <ul style="list-style-type: none"> <li>• Wiltshire Council would be providing a facilities Manager to look after the centre and to promote its use. This Officer has not yet been appointed but the process had started.</li> <li>• Tisbus, would be moving to the Nadder Centre car park, to release car parking on one of our council estates.</li> <li>• On Saturday 16 June 2018, there would be a repeat of last year’s charity day. Hoping to get Nadder Charities involved.</li> </ul> <p>Steve Harris added:</p> <ul style="list-style-type: none"> <li>• A Christmas programme of activities had been put together and marketed to local schools. This would include a film session and rhyme time.</li> <li>• The terms of the lease for the use of the centre by the History Society, were in the process of being drawn up.</li> <li>• Cranbourne Chase AONB discussions ongoing – looking at requirements for the future.</li> <li>• The old sport centre site was considered by Cabinet, where it was decided that the site would be put up for sale.</li> </ul>
60	<p><u>Local Youth Network (LYN)</u></p> <p>Cllr Wayman noted the record of the last LYN Management Group Meeting and</p>

	<p>considered the recommendations for funding, as detailed in the papers attached to the agenda.</p> <p><b><u>Decision</u></b>  <b>Kilmington &amp; Stourton Cricket Club was awarded £1,000 of Capital Funds from the Grants Budget, towards the purchase of a new mower.</b></p> <p><b><u>Decision</u></b>  <b>Fovant Youth Club was awarded £2,000 of Capital Funds from the Grants Budget, towards a new toilet area.</b></p> <p><b><u>Decision</u></b>  <b>The bid from La Folia was not supported by the Board.</b>  <b><i>Reason</i></b>  <b><i>The LYN felt that the project would not benefit enough young people from the community area.</i></b></p> <p><b><u>Decision</u></b>  <b>The Board awarded £300 to Seeds4Success to extend the Monday evening activities programme at the Nadder Centre until end of March 2018.</b></p>
61	<p><u>Health &amp; Wellbeing Group (HWB)</u></p> <p>The Board noted the attached report from the Group. Lead Member, Cllr Jose Green updated that she had attended a couple of meetings to look at what had been happening across the area in terms of dementia awareness.</p> <p>Anne Marie has submitted a report as she had now reached the end of her first contract.</p> <p>Looking ahead:</p> <ul style="list-style-type: none"> <li>• Over next 6 months, the Group would be building on work already carried out over the last 12 months. Cllr Green would be reviewing the village spread sheets.</li> <li>• A Pop up café on Wednesdays in Hinton hall was planned.</li> <li>• A Memory group and Sunshine group would be starting in Tisbury.</li> <li>• Work over the next 6 months would be focused in Mere.</li> <li>• Hoping to initiate 'Chat Mats' in Mere and Tisbury over the next 6 months.</li> <li>• A 'Tea at 3' initiative would start in January.</li> </ul>
62	<p><u>Community Safety Group</u></p> <p>Lead Member, Cllr Jeans gave an update to the Board. The Board noted the draft record of the last meeting held on 22 November 2017, attached to the agenda.</p> <p>Cllr Jeans noted that the Group had suggested taking on the SIDs scheme into</p>

	<p>its remit, as it felt the scheme more naturally sat within the work of this Group.</p> <p>Cllr Deane proposed that this suggestion be discussed at the next Councillors meeting.</p>
63	<p><u>Area Board Funding</u></p> <p>The Board considered two applications for funding from the Community Area Grant Scheme, as detailed in the agenda.</p> <p><b><u>Decision</u></b>  <b>Wiltshire Rural Music School was awarded £1,000 towards the Music on Your Doorstep project.</b></p> <p>Steve gave background to the Art Commissioning project. The funding was for an Artist to produce a piece of work and then also run community engagement workshops. The Board was asked to re-align the previous £5k that had been set aside to this project.</p> <p><u>Comments:</u>  This should come back in great detail before it goes ahead. It is a lot of public money and we need to be shown that it was being spent in an acceptable way.</p> <p>It would be useful if it was a local artist. This could be condition this.</p> <p>What is the £500 legal cost for? <u>Answer:</u> It was the legal fee to transfer the £5800 to the artist.</p> <p><b><u>Decision</u></b>  <b>Messums Wiltshire Ltd was awarded £5,000 towards an art installation at the Nadder Centre, with the condition that a project plan come to the Board for approval under delegate powers to the CEM in consultation with Board Cllrs.</b></p> <p><b><u>Decision</u></b>  <b>The Board awarded £230 of Fingerpost funding for 2017/18 to Sutton Mandeville.</b></p> <p><b><u>Decision</u></b>  <b>The Board agreed to allocate a further £1,400 to the Fingerpost Project scheme.</b></p>
64	<p><u>Close</u></p> <p>The next meeting of the South west Wiltshire Area Board will be held on 7 February 2018.</p>

This page is intentionally left blank

<b>Subject:</b>	<b>Clean-Up Wilts campaign and the Great British Spring Clean</b>
<b>Officer Contact Details:</b>	<b>Your Community Engagement Manager (<a href="#">CEM</a>)</b>

This year phase two of the county-wide Clean-Up Wilts campaign will be implemented.

The campaign, which was launched last October, focused on targeting fly-tipping across the county as its first phase.

This year the campaign focuses on litter from food-on-the-go, chewing gum and cigarette butts and community litter picks as part of supporting the national Great British Spring Clean, which takes place on the weekend of 2 to 4 March (2018). Over the last two years – communities across Wiltshire have participated in the litter picks and more than 30 tonnes of litter has been collected.

As a result of this participation, Wiltshire Council has been shortlisted as a finalist in the Keep Britain Tidy Network Awards – Local Authority Award category. The shortlisting is based on the evidence of the strong community spirit that prevails in Wiltshire, which was clearly demonstrated last year on the weekend of the 2017 Great British Spring Clean (Friday 3 to Sunday 5 March).

More than 3,200 volunteers took part in litter picks across the county, giving up their time to help make their communities a better place to live. In all, 152 litter picks took place throughout the county during the weekend, and the volunteers collected 3,025 bags of rubbish, with 18.15 tonnes collected in total.

The award winner will be announced on 8 February. Just being a finalist is recognition of what makes Wiltshire unique. It would be great if this year's Great British Spring Clean event could be another success.

It would of course be much better if people didn't drop litter in the first place and that we didn't have to spend more than £2.5 million each year collecting this rubbish. Wiltshire is a beautiful county and we want to keep it that way.

We will hear more about the Clean-Up Wilts campaign and this year Big Spring Clean on tonight's agenda.







## **SOUTH WILTSHIRE COMMUNITY POLICING TEAM – JANUARY 2018**

This report will focus on two aspects that remain our priority: The supply of Class A drugs in the South of the County and Community Engagement in the South.

### **County Lines Drug Networks**

An investigation into the supply of Class A drugs into the South Wiltshire Area started over a year ago and culminated in two days of action in July where 25 arrests were made. Where this investigation differed from previous investigations was on two points:

1. It identified the tactics of County Lines Drug Networks, where dealers from larger urban areas travel to smaller towns to deal and exploit.
2. It focused on the need to protect a vulnerable sector of our society from the practice of Cuckooing.

In December, 22 offenders were sentenced following guilty pleas in Winchester Crown Court with a further local man held on remand whilst awaiting trial.

- Christian Quadjovie, age 18, Greenwich, sentenced to two-and-a-half years imprisonment
- Tomisin Ifelowa, age 19, Greenwich, sentenced to two-and-a-half years imprisonment
- Shavase Lemar-Taylor, age 27, Croydon, sentenced to 15 months imprisonment suspended for 12 months
- Pellumb Buci, age 18, of Villas Road, London, sentenced to three years imprisonment
- Jennifer Cooper, age 34, of no fixed abode, Bulford, sentenced to two years imprisonment suspended for two years
- Ollie Piper, age 25, of Barnard Street, Salisbury, sentenced to two years imprisonment suspended for two years
- Joshua Jackson, age 18, London, sentenced to 15 months imprisonment
- Brendan Cooper, age 39, of no fixed abode, Salisbury, sentenced to three years and four months imprisonment and subject to a five year criminal behaviour order
- Justin Ling, aged 46, of Barnard Street, Salisbury, sentenced to two years imprisonment suspended for two years
- Wayne Dix, aged 37, of Barnard Street, Salisbury, sentenced to 12 months imprisonment suspended for 12 months
- Dean Cochrane, 36, of Rollestone Street, Salisbury, sentenced to two-and-a-half years imprisonment
- Timmy Thomas, aged 51, of Bishopdown Road, Salisbury, sentenced to 12 months suspended for 12 months
- Tracey Robertson, aged 41, of Cherry Close, Salisbury, was sentenced to 18 months imprisonment suspended for two years
- Daniel Domanski, aged 30, of Carmelite Way, Salisbury, was sentenced to 18 months imprisonment suspended for two years
- Helen Hughes, aged 41, of Elm Grove Road, Salisbury, sentenced to two years imprisonment suspended for two years
- Mark Ledsome aged 43, of Southampton Road, Salisbury, sentenced to three years and four months imprisonment
- Stephen Maidment, aged 52, of Lovatt Green, Salisbury, fined £120
- Jacqui Crotty, aged 41, of Netherhampton Road, Salisbury, sentenced to 12 months suspended for 12 months



- Maxi Andrews, aged 23, Nottingham, pleaded guilty to conspiring to supply class A drugs (heroin) and was sentenced to 40 months imprisonment
- Darren Davis, aged 22, Nottingham, pleaded guilty to conspiring to supply class A drugs (heroin and crack cocaine) and was sentenced to four years imprisonment
- Jason Dowding, aged 29, Nottingham, pleaded guilty to possession with intent to supply class A drugs (heroin) and was sentenced to 24 months suspended for two years
- Michael Hughes, aged 31, of Odstock Road, Salisbury, pleaded guilty to supply class A drugs (heroin) and was jailed for 40 months.

So what has been the impact of this operation?

Part of the operation was to address the issues of Vulnerability. Addiction causes so many problems to the individual and their community, draining resources across the wider public sector. The work of Turning Point to address substance misuse has been a key element in changing longer term attitudes to addiction. They have worked with many of the above and will be a significant factor in understanding why suspended sentences have been issued to some. Following the arrests, 16 people engaged with Turning Point; 8 are still engaged, with 4 in prison, 2 have left the area, 1 is in rehab and 1 has dropped out. In addition, CPT Officers have introduced a Community Tasking Team, who can be tasked to assist with any priority. This team of officers has helped improve the proactive work of our CPT Officers, providing them with the tools needed to tackle drug dealers that operate across County Lines, so that this work becomes our business as usual.

The overall crime rates have risen in the South by 6.4% against a Wiltshire rise of 9.9%. Nationally, crime is rising and although I cannot provide a figure for whole of 2017, the year ending June 2017 saw a rise of 13% according to the Office of National Statistics. These figures are against a backdrop of a new operating model (CPT), resourcing concerns and the continued uncertainty of austerity. No rise in crime can be seen as good, but it does demonstrate that we are being effective in the South with rising population and demand.

If we look specifically at the crime data for drugs:

	Wiltshire & Swindon			South Wiltshire		
	2017	2016	% Change	2017	2016	% Change
All Drug Offences	1022	1234	-17.2%	165	176	-6.3%
Possession of Drugs	825	1041	-20.7%	95	150	-36.7%
Trafficking of Drugs	197	190	+3.7%	70	26	+169.2%

I believe that drug offences are an indicator to how proactive officers are. They rely upon effort to stop and search and to then take action. South Wiltshire has seen a significant drop in the offences of possession, because of our focus is on the Dealers. Our Trafficking offences have risen significantly and now equate to over 35% of all Trafficking offences in Wiltshire and Swindon. This might seem like an alarming rise, but actually represents a very positive aspect of local policing, which I maintain puts South ahead of other areas of Wiltshire in their response to this crime type; a problem that is present in all our towns. The tendrils of Class A abuse spread out through all crime types and so although there are crime rises, which are not good, the rises are less than other areas, both as a county and nationally.

### Community Engagement

How many times have I heard that you never see a Police Officer anymore? The reality is putting a Police Officer on a foot patrol is difficult when balancing with falling numbers of Officers and increasing demand and population driving the need for cars. But how can we engage with our community when driving past



the people who want to speak to us? PCSOs have been introduced and this has addressed much of this gap, but there are more opportunities than just this. This is something that I wanted to improve for some time. So what is Community Engagement?

Community Engagement can be divided into:

- **Visibility** – this is more than just visible staff and included visible communications and engagement channels.
- **Accessibility** – the public need to know all the ways in which they can access the policing service.
- **Familiarity** – by engaging and building familiarity and trust, communities can take a greater responsibility in keeping themselves safe. This could be through schemes such as Neighbourhood Watch, becoming a Special or other Volunteer roles, or providing community intelligence to help direct resources more efficiently.

Wiltshire Police will be introducing Independent Advisory Groups (IAG) during 2018, one of which will be located in the South. The primary role of an IAG is to act as a critical friend, to help challenge conventional thinking and to provide an independent perspective on issues with a particular focus on diversity. The members are not to provide specialist advice on policing issues, but to provide advice on how policing services may be, or are being, perceived by our communities. We will not be looking to people who have a voice, such as Councilors, but more to those from harder to reach sectors of our community. There will be more on this as our plans develop.

In 2016 Salisbury suffered a series of purse thefts that peaked during the Christmas Market time. Requests to have someone on permanent foot patrol in the city was met with resistance due to available resources and rarely occurred. So for December 2017 I introduced a concept of Pulse Patrols, which I believe were first used in London to resolve ASB issues to good effect.

The notion of a Pulse Patrol is to get as many officers as possible into a small area for a short period of time at the same time. This was with the aim to:

- Deny Space to Criminals
- Detect Offences at the earliest opportunity
- Deter Criminals from coming to Salisbury
- Engage with the Community. This is to keep them informed in what we are doing, to reassure them that we are following community intelligence and to recruit them as our eyes and ears by providing further community intelligence that we can act upon to improve their community.

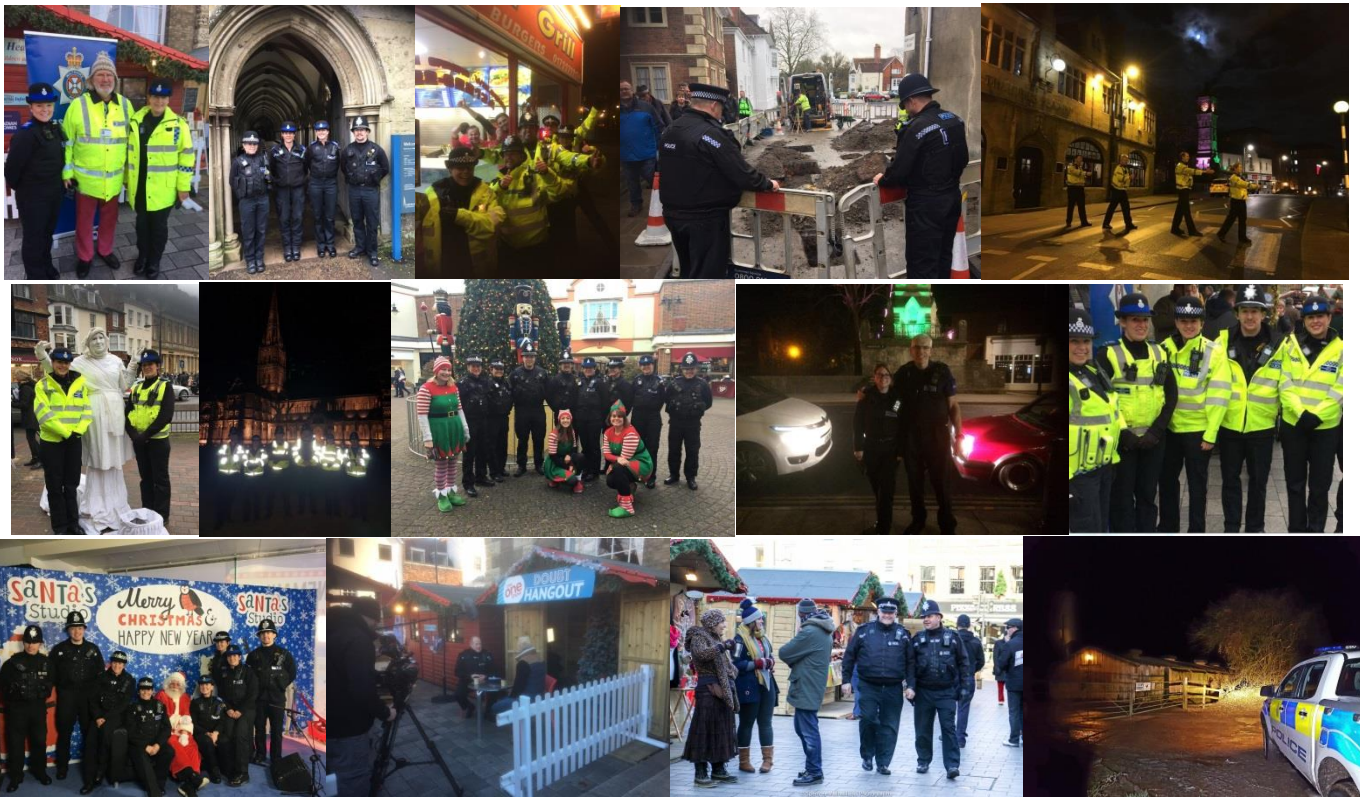
The instruction was to each team on duty to allocate a time and location for everyone available, including myself, to conduct foot patrols and record their engagements for use on Social Media, so we can get the message to a wider audience. These Pulse Patrols were to focus on the Christmas Market, but it was not to be used exclusively, so similar patrols were conducted in Wilton Shopping Village and our Rural Community as well as to find traffic offences or vulnerability checks in response to our Class A drug priority. The competitive nature of teams took hold and we witnessed the attitude from 'nobody available' to entire team photos, including Special Constabulary, Prisoner Transport and even Inspectors in and with the community. Staff talked to the community, without the need to treat people as witnesses or offenders and the community started to talk back. The PCSOs felt supported as the teams around them gained an insight into what they do on a daily basis. The public response changed from 'what's happened?' fearing the worst, to reassurance that we were there. The feedback from the market was they were not seeing the 'usual suspects' and the purse thefts recorded for the month of December was only 2.

Of course there were times when no Pulse Patrol was possible, but teams are still thinking about how they can be proactive, using this as a template to tackle problems. Recent traffic operations and arrests of our County Line Drug Dealers have been down to adopting this 'all in' approach.



Our channels of communication with the Community need to improve. We have traditionally relied upon 101/999 as a means to get information into the Police and then use traditional newspapers and radio to get our message out. We have promoted the use of Community Messaging as a means to get summaries of crimes and key messages and have recently pushed the use of our Social Media through Facebook (Salisbury Police) and Twitter (@SouthWiltsCPT). Social media used correctly can be a positive tool for communication: A foot patrol might be seen by 100 people of whom 5 may have actually engaged. A Facebook post is seen by an average of 3,000 people, 50 of whom engage. These are not either/or options and we will be exploring all methods to keep pushing positive messages about our activities and allowing the Community to see what we are doing – this works in the same way as our Pulse Patrols do in the principles of Deny, Detect, Deter and Engage. Below is just a sample of images that appeared on Facebook during December.





- **Burglary:** The series of city centre commercial burglaries has slowed and one person remains under investigation. A few recent dwelling burglaries have been reported in Salisbury and Whiteparish/Downnton/Nomansland where jewellery appeared to be the focus. This has similarities to offences in Hampshire and we are sharing intelligence on this.
- **Bike thefts:** After posting an image from our CCTV of a youth stealing lights from a bike in the Cheesemarket a youth confessed to their parent... offences appear to have stopped!
- **Feedback:** Several messages of support regarding our visibility during December, but a nice one to finish this report with was a gentleman who was visiting the city from Bournemouth:  
He said that he's very unhappy with the way his local police force appear to ignore street crime & beggars. He told me that he's been to Salisbury a few times & says that Salisbury police should go to Bournemouth to teach that force how policing is done as he's never noticed any street crime or ASB in the area.

There is still much to do to keep South Wiltshire Safe, but it does not hurt sometimes to reflect that our efforts (credit must go to partners too) are recognised by some as being positive and a simple 'thank you' or gesture of support can go a long way in life.

**Pete Sparrow**  
**Sector Inspector South Wiltshire**  
**Salisbury, Wilton & Alderbury**



## **Salisbury Area Board - Report, Feb 2018**

### **Recruitment**

There has been a period of recruitment for the on-call staff. This includes the stations of Salisbury, Wilton and Amesbury. There has been radio, TV and press promotion, a presence on market day in the Guildhall Square and further 'have a go' sessions. This has resulted in 12 applicants coming forward, with 3 of these specifically for Salisbury.

### **Community Engagement**

Work at the station has included using the appliance bay as blood donation service. The NHS spend approximately £4 million a year on hiring venues, by using our station the NHS gets a free venue and we get community contact when the donors are waiting.

We still want contacts for getting to vulnerable persons. Our safe and well advisors are keen to get to each parish and they want to visit individuals in their home. We need your help to make contact.

We can also arrange visits to our fire stations or one of our safety centres. For more information or to make a booking for your school or pre-school, please visit our webpage; <https://www.dwfire.org.uk/school-visits/> or email [enquiries@dwfire.org.uk](mailto:enquiries@dwfire.org.uk)

If you need a smoke alarm, some advice or are worried about what you would do in an emergency, contact us for a free Safe and Well visit; <http://www.dwfire.org.uk/safety/safe-and-well-visits/>

### **Response**

#### **Total Fire Calls for Salisbury Fire station; 01/07/17-31/08/17**

##### **November**

<b>Category</b>	<b>Incidents</b>
False Alarm	32
Fire	7
Special Service	8
<b>Total</b>	<b>47</b>

1 hoax call

##### **December**

<b>Category</b>	<b>Incidents</b>
False Alarm	17
Fire	11
Special Service	16

<b>Total</b>	<b>44</b>
--------------	-----------

**Availability of Wholetime (1<sup>st</sup>) appliance;**

100%

**Availability of On-Call (2<sup>nd</sup>) appliance;**

November %

Appliance	Day	Night	Average
31P2	78.3	91.5	84.9

December %

Appliance	Day	Night	Average
31P2	70.4	82.1	76.2

**On-Call Recruitment**

Recruitment is an ongoing issue. Despite this Salisbury RDS are still maintaining a very good availability of the appliance. They currently have 3 potential recruits working their way through the recruitment system and one trainee now on station. The station are working hard to maintain contact with them whilst they go through this process.

The service will be moving to new method of payment for its on-call staff. This will be a salary based scheme rather than utilising a retaining fee. This means on call staff will be rewarded for the cover they give rather than the incidents they attend. It will cost the service more money, but it is believed that it will result in better appliance availability.

Recruitment campaign

If anyone is interested in becoming an On Call Firefighter, visit the webpage; <https://www.dwfire.org.uk/working-for-us/> or pop in the station for a chat on Monday evenings between 7pm and 9pm (Salisbury) or Wednesday evenings 7pm – 9pm (Wilton and Amesbury).

**Community Safety Plan**

DWFRS Community Safety Plan can be found on the DWFRS website; <http://www.dwfire.org.uk/community-safety-plan/>

Jason Moncrieff

Station Manager South Wiltshire

Salisbury, Amesbury and Wilton.





**DORSET & WILTSHIRE**  
**FIRE AND RESCUE**

Email: [Jason.moncrieff@dwfire.org.uk](mailto:Jason.moncrieff@dwfire.org.uk)

Tel: 01722 691249 | Mobile: 077774413935



**WILTSHIRE COUNCIL  
SOUTH WEST WILTSHIRE AREA BOARD**

**7 FEBRUARY 2018**

---

**South West Wiltshire 'Our Community Matters'  
Local issues: local action**

**1. Purpose of the Report**

To update members on the progress made to address the priorities identified by the community at the 'Our Community Matters' Joint Strategic Assessment event held on 16 November 2016.

**2. Background**

The South West Wiltshire 'Our Community Matters' event was held on 16 November 2016 at the Nadder Centre in Tisbury. Over 90 members of the public and partner agencies attended and participated in the event, which focused on the data set out in the [Community Area Joint Strategic Assessment 2016-17](#).

The JSA brings together the results of research conducted by the major agencies and public sector bodies in Wiltshire over the last six months. The project was initiated by the Wiltshire Health and Wellbeing Board and the Wiltshire Assembly. These bodies will use the priorities emerging from the events to focus and support strategic projects, activities and services across Wiltshire.

Participants at the events used the data to inform themed roundtable discussions and to identify local priorities underpinned by the research. All participants had the opportunity to vote on the priorities and the results are set out in this report. Following agreement on the priorities, the themed roundtables then looked at practical community-led actions that could be taken to address the issues identified.

The purpose of the event was to:

- Gain a consensus around priorities for the area
- Provide the basis for community-led action and projects over the next two years
- Develop a community plan for the area
- Provide the Council and partners with a clear focus for local actions

The Area Board adopted these priorities shortly after the event and has since focused on supporting and facilitating local actions to tackle those priorities.

### **3. Priorities identified**

The following documents set out the JSA analysis presented to the 'Our Community Matters' conference and the priorities identified by the community on the night. The following documents are available to view online:

- [Summary of issues identified by the research.](#)
- [Priorities agreed at the event.](#)

### **4. Moving forward with community-led action**

To address the priorities, the Area Board has been using its strategic influence and delegated powers to shape the delivery of local services and actions. It has also used its delegated resources to facilitate and support community-led projects. The community engagement manager has been working with local community groups and partners, using the local priorities as a work plan. Some of the actions are easier to address than others and work has focussed on areas where tangible outcomes and progress can be delivered. This has helped to capitalise on the enthusiasm and momentum generated by the event.

### **5. Impact**

Appendix 3 sets out the actions achieved since the 'Our Community Matters' event took place. This is a two-year programme and the first quarter figures represent the period between April – October 2017. The report shows the actions that have been delivered to address the priorities in the 10 JSA themes. It is important to note that these actions have been delivered by a wide range of agencies and are not solely the actions of the area board. The area board may have funded some actions or offered support to others. Some may have been independently by the groups concerned, but all help to address the priorities identified by the community.

### **6. Recommendations**

- (1) That the area board notes the JSA Quarter 1 update report.
- (2) That the area board expresses its thanks to the organisations, groups and partners who have contributed actions that address the local priorities set by the community.

---

Report Author: Steve Harris – South West Wiltshire Community Engagement Manager  
Tel: 01722 434211  
E-Mail: [stephen.harris@wiltshire.gov.uk](mailto:stephen.harris@wiltshire.gov.uk)

South West Wiltshire JSA Issue	Priority	Actions Completed Quarter 1: April- June 2017	Actions Completed Quarter 2: July- September 2017	Events/ Funding/ Extra Information
Children and young people	Childhood obesity	Monday evening sessions being delivered by Seeds4Success at the Nadder Centre.	Health and Wellbeing Fair held on 27 Sept - included promotion of healthy living activities.	£3,280 allocated in 2015/16 towards delivery of Anybody Can Cook sessions across the community areas. £1,000 awarded in 2017/18 to Kilmington & Stourton Cricket Club for new
Children and young people	Mental and emotional health	Funding for enhanced NCS programme proposed by LYN Management Group and approved by Area Board.	Salamander course delivered at Mere Fire Station, benefitting 15 young people from across South West Wiltshire. NCS enhanced programme delivered.	£2,866 allocated in 2017/18 for Salamander course. £3,050 allocated in 2017/18 for NCS enhanced programme. £1,000 awarded in 2017/18 to Wiltshire Rural Music School for 'Music on your Doorstep' project to be
Children and young people	Positive leisure time activities	Monday evening sessions being delivered by Seeds4Success at the Nadder Centre.	Monday evening sessions being delivered by Seeds4Success at the Nadder Centre.	Monday evening youth sessions in the Nadder Centre. £300 allocated in December 2017 to extend sessions until end of March 2018. £2,000 awarded in 2017/18 to Fovant Youth Club towards roof repairs and other works.
Community Safety	Protecting the vulnerable	New Community Safety Partnership established for South West Wiltshire, to discuss key issues and enable a link with statutory services at a local level.	Community Safety Partnership meeting on 27 Sept	£11,894 allocated in 2013/14 (+ £5,000 from CATG in 2014/15) for Community Winter Weather response scheme; six tailgate spreaders and fourteen push-along spreaders operated by local

<b>Community Safety</b>	Highway Safety	Funding for Community Speed Indicator Device scheme agreed by Area Board (£8,000). Parishes invited to declare interest in being part of scheme.	25 parishes respond to indicate they would like to be involved in Community SID scheme. Area Board increases funding to £12,500, funding up to 8 new devices. Parishes/consortia invited to bid. Bishopstone-led consortia successfully	£12,530 allocated in 2017/18 for Community Speed Indicator Device Scheme.
<b>Community Safety</b>	Alcohol and drug abuse	Public Health representatives attend Health and Wellbeing Group having identified Wilton community area as having the highest proportion of hospital admissions as a result of alcohol in the whole of Wiltshire. Key target to combat social isolation; Area Board funded Wilton Community Land Trust £2,500 towards running Wilton week, which included an opportunity to promote what people could get involved with in the area.	Health and Wellbeing Fair planned for 27 Sept - will include promotion of healthy living activities and local clubs that people can join. Turning Point will have a specific display to raise awareness in this area.	£2,500 allocated in 2017/18 towards Wilton Week event.
<b>Culture</b>	Affordable access to cultural activities	Funding for Wilton Town Trail and Map Boards project agreed by Area Board.	Map boards (with guides) installed in locations around Wilton.	towards Wilton Town Trail and Map Boards project. £850 awarded in 2017/18 towards chalke badge
<b>Culture</b>	Diversity and social inclusion	Order for art display area placed.	Art display area work completed in the Nadder Centre. Met with co-ordinator of Wylve Valley Art Trail to discuss how area could be best used.	£3,000 allocated in 2016/17 to install art display area within the Nadder Centre.
<b>Culture</b>	Participation in arts, crafts and culture	Discussions held with Wiltshire Council arts officer and Messums Wiltshire re. possible future project.	Grant application from Map of Australia Trust to be considered at Area Board meeting on 11 October for chalke badge restoration project.	towards a public art delivery in the Nadder Centre. £5,800 already available through s106 funding as a result of Wyndham Place estate. £850 awarded in 2017/18 towards chalke badge restoration project in Compton Chamberlayne.

<b>Economy</b>	Broadband and digital	Bowerchalke Parish Council awarded £635 and Berwick St John Parish Council awarded £620 out of Community Communications project	Quidhampton Village Hall grant application out of Community Communications project fund to be considered at Area Board meeting on	£5,000 allocated in 2015/16 for Community Communications project to enable wifi to be made available in local venues.
<b>Economy</b>	Support for existing businesses	Area Board funded £2,500 towards Wilton Week project, which included pop-up shops to promote use of empty shops within the town.	Wiltshire Scrapstore took part in Wilton Week and now looking to open shop in Wilton, grant application for start up costs to be considered at Area Board meeting on 11 October.	£2,500 allocated in 2017/18 towards Wilton Week event. £4,619 awarded in 2017/18 for Wiltshire Scrapstore setup costs.
<b>Economy</b>	Apprenticeships and work experience		Community Engagement Manager shadowed for a week by A-Level student living in Mere.	
<b>Environment</b>	Fly tipping and litter		Meeting held with Environment Services Enforcement Management to explore issue in South West Wiltshire. Manager will report back.	
<b>Environment</b>	Wildlife and biodiversity	Meetings held with Wiltshire Wildlife Trust to discuss holding a rivers improvement meeting to explore possible community responses.	River improvement meeting held in Wilton - key actions to be followed up and volunteering opportunities promoted.	£310.20 awarded in 2017/18 for community orchard in Burcombe.
<b>Environment</b>	River quality	Meetings held with Wiltshire Wildlife Trust to discuss holding a rivers improvement meeting to explore possible community responses.	River improvement meeting held in Wilton - key actions to be followed up and volunteering opportunities promoted.	
<b>Health and wellbeing, Leisure</b>	Physical fitness and activity	3 local schools and various community groups signed up for The Big Pledge 2017; London Calling.	Health and Wellbeing Fair planned for 27 Sept - will include promotion of physical fitness and activity groups/classes. Event also coincides	
<b>Health and wellbeing, Leisure</b>	Healthy lifestyles	Local activities directory compiled by Health and Wellbeing champions. Sent out to all key local partners in May 2017.	Health and Wellbeing Fair planned for 27 Sept - will include promotion of healthy living activities.	£633.57 awarded in 2017/18 for community project at Lynch Close in Mere.

<b>Health and wellbeing, Leisure</b>	Support for carers	Local activities directory compiled by Health and Wellbeing champions. Sent out to all key local partners in May 2017.	Health and Wellbeing Fair planned for 27 Sept - will include promotion of local groups and activities.	
<b>Your Community &amp; Housing</b>	Affordable housing	Councillors holding discussions to explore possible future schemes in the area.		
<b>Your Community &amp; Housing</b>	Deprivation and poverty	Funding for enhanced NCS programme proposed by LYN Management Group and approved by Area Board.	Salamander course delivered at Mere Fire Station, benefitting 15 young people from across South West Wiltshire. NCS enhanced programme	£2,866 allocated in 2017/18 for Salamander course. £3,050 allocated in 2017/18 for NCS enhanced programme.
<b>Your Community &amp; Housing</b>	Digital engagement and broadband	Bowerchalke Parish Council awarded £635 and Berwick St John Parish Council awarded £620 out of Community Communications project fund.	Quidhampton Village Hall grant application out of Community Communications project fund to be considered at Area Board meeting on 11 October.	Community Communications project to enable wifi to be made available in local venues. £415 awarded in 2017/18 for digital recording system for Chalke Valley Playschool.
<b>Transport</b>	Road improvements	Local parishes identify key locations for white lining and agree any funding contributions.	White lining scheme rolled out.	£10,000 allocated in 2016/17 for White Lining Renewal scheme.
<b>Transport</b>	Access to public transport	Discussions held with Tisbus about future events at the Nadder Centre to raise awareness of the bus service provided.	Agreed with Tisbus to run future events at the Nadder Centre including; table top sale, bingo evening and possibly cinema afternoons for older	
<b>Transport</b>	Highway infrastructure	Community Areas Transport Group meets for first time in 2017/18 to discuss local schemes and initiatives.	Community Areas Transport Group meets to progress local schemes and initiatives.	£1,813 awarded in 2017/18 for new footpath in Bishopstone.



<b>Older People</b>	Social isolation and loneliness	Area Board funded Wilton Community Land Trust £2,500 towards running Wilton week, which included an opportunity to promote what people could get involved with in the area and culminated in a Big Lunch. Bowerchalke Village Hall awarded £5,000 towards renovations that would enable community groups to continue to meet there.	Health and Wellbeing Fair planned for 27 Sept - will include promotion of local groups and activities.	£2,500 allocated in 2017/18 towards Wilton Week event. £310.20 awarded in 2017/18 for community orchard in Burcombe. £633.57 awarded in 2017/18 for community project at Lynch Close in Mere. £3,610 awarded in 2017/18 for new kitchen at West Knoyle Village Hall.
<b>Older People</b>	Dementia	Area Board agreed to form DAA in February 2017. First conference took place on 26 June 2017, providing an opportunity for best practice to be shared between parishes. Chalke Valley Hub signs up as a Safe Place.	Health and Wellbeing Fair planned for 27 Sept - will include promotion of local groups and activities. Dementia Friends session in Barford St Martin planned for October.	
<b>Older People</b>	Support for carers	Local activities directory compiled by Health and Wellbeing champions. Sent out to all key local partners in May 2017.	Health and Wellbeing Fair planned for 27 Sept - will include promotion of local groups and activities.	



**Minutes of the Town Team Meeting held on Thursday 18<sup>th</sup> January 2018 at 7.30pm,  
in Wilton Town Council Chamber.**

**Present:**

Cllr Phil Matthews (Burnbake) PM

Cllr Peter Edge (Town Council) PE

Jonathan Greening (Minister Baptist Church) JG

Rev'd Mark Wood (Rector, Parish Church) MW

Andy Kingsey (WDBC) AK

Zoe Cupit (Wilton Community Land Trust Manager & Minute Taker) ZC

**Apologies**

Cllr Paula Johnston (Chair) PJ

Cllr Sue Van Leest (Our Wilton) SvL

Steve Harris (Area Board Community Engagement Manager) SH

Jake Farrell (Seeds for Success) JF

Dan Brown (Big Dog Management) DB

Millie Carreras (Big Dog Management) MC

Gary Nunn (Community Events) GN

Mr Boase (Wilton & Barford School) RB

**Chairman's welcome and apologies**

Meeting Chaired by Vice Chair Phil Matthews

Apologies received were noted as above

**Approval of the minutes of the previous meeting held November 2017**

Minutes approved Proposed by Ak 2nd MW

**Any matters arising**

PE - Gateway signs, no further progress, two of the signs need moving, two signs still to go up. PE to follow up.

Wilton Parkway - Atkins report due out February. Wilton has been put onto the train timetable, the only issue that could stop progress is finance for the station. Next meeting 1st February, PE and PM to report back.

Cycle Race - PE suggested linking with Rotary who are keen to partner and resurrect the Rotary Bike Race. PE to recommend to Council.

MW reminded all that Ride and stride Church cycle ride takes place 2nd Sat September

Public awareness training sessions on how to operate the defibrillator, Wilton Town Council Chamber January 30, at 7pm. All welcome

### **Christmas Debrief**

PM, on behalf of the Council, thanked GN and all the helpers, for making the Christmas event so successful

Suggested a later start time for the Market Stalls 3/4pm

A Change of date was discussed but PE to recommend to Council that the date stays as 1st Monday in December

GN - Noise from the market was distracting during the Nativity. MW suggested more speakers, will investigate.

MW - The local Foresters and Wilton Christian Fellowship contributed £100 (each) for new costumes. Consequently the school cast was 18, rather than 5, Very much appreciated

It was suggested that opening Wilton House car park would be helpful, PM to approach estate

ZC - The Christmas Tree is looking a little tired, Council aware and discussing surgery.

PE - Increased Christmas budget for 2018 to put lights on surrounding streets.

### **Spring Clean/ Going Green**

The Great British Spring Clean is an annual national campaign that aims to bring people together to clean up litter and improve communities.

TT suggests that Wilton take part this year. We have litter pickers etc from previous years. ZC to confirm date (mostly likely March)

ZC met with local resident Laura Twomey-Hunt to discuss Wilton becoming Greener. Ideas included improving recycling facilities in the town, encourage business to reduce their waste, recycle more and use less plastic, use recycle cups,

swapping to LED bulbs, etc. Other suggestions included plastic bag dispensers in every shop where residents can leave bags for others to use, stickers in shop windows to show they are green and forming a consortium to bulk buy and reduce the frequency of deliveries.

JG enquired about waste collection after the Thursday market, was concerned the service was stopping. PE to investigate and report back.

## Updates

ZC (CLT) - focusing on the Enterprise Hub due to open Autumn 2018.

One of the workshop spaces in the Enterprise hub will be occupied by a Mens Shed. Started in Australia and set up to tackle loneliness, Mens Sheds are open to men of all ages and will provide a welcoming, inclusive environment for anyone wanting to learn new skills or share existing ones, working side by side on projects of their own or for the wider community. The Shed will be led by the members who decide when they come and what projects they do.

The Shed will be kitted-out with workbenches and tools and we will be looking for donations of tools and sponsorship from local people and organisations. Please share with member of your groups who might be interested.

More information can be found on the UK Mens Shed Association Website .

MW (Rector, Parish Church) - enjoyed a busy Christmas.

From March the Parish Newsletter will be produced quarterly and deliver to homes in the area.

The new headteacher, Mr Boase (Wilton & Barford School) is keen to be involved in community activities

AK (WDBC) - The next business breakfast is Tuesday 13th Feb at Bird and Carter. The AGM is 13th March date & venue tbc

JG (Minister Baptist Church) - usual activities continue this years theme is HOPE

The Christmas Lunch was well received, but is in need of a new coordinator

Many Thanks to PE and Pam Edge for all their help.

PE (Town Council) - Council met with environment agency to discuss the bund. The agency proposal has been rejected , the council has made some suggestions and is waiting for a response.

CLT is making a presentation to Council 6th Feb

Hugh Moore has donated the Freedom of the borough of Wilton manuscript and Chest.

Precept set - a small increase 1p per day.

Petition of closure of Lloyds has had a good response. ZC suggested using benchmarking information to show how many residents/businesses use the facility.

Petition to John Glenn and Lloyds Manager by beginning of Feb (forms to PE by end of Jan)

PM emailed John Glen who will contact the bank and report back.

Council approved motion to ask Wiltshire Council to instigate parking on pavement prohibition area of North, West and Shaftsbury Road

Michael Herbert Hall - 10.30am- 12.30 30th Jan sponsored Zumba fundraising for motor neurone disease

PM (Burnabake) - attended Wiltshire Police and Crime Panel

Police Precept increase by £12 per year

PM suggested using Wilton Police station as a custody suite.

A celebration meal was held at Community Centre Monday 26th 2.30pm to thank Burnbake staff and Volunteers

### **SvL (Our Wilton)**

The 44 veterans flats are on target for November to welcome our first residents. Our Wilton Trust is still fundraising to ensure that the flats are fully fitted out and that the veterans have access to the right training, support and employment opportunities.

There are monthly site visits on Saturday mornings, the next one on the 24th February at 10am. Email [sue@ourwilton.org](mailto:sue@ourwilton.org) if you'd like to book a place.

We are working with the CLT to establish a list of interested small businesses who wish to take up a space in the new Enterprise Hub, as well as working to set up the social enterprise for veterans at the community cafe and involving local businesses in the planning of the business space. The next few months will be a really exciting phase of the development, with many residents already offering to volunteer and be part of the project.

SH (Area Board Community Engagement Manager)

The CH4LKE Mobile Project is now underway - and has rapidly gained a certain amount of momentum! Find out more about this initiative to bring super fast broadband and 4G mobile coverage to a rural area at South West Area Board Meeting on Wednesday 7th February, 6.30pm at the Nadder Centre in Tisbury.

We are approaching the end of the financial year and the Area Board still has funding available for community grants, health and wellbeing projects and particularly youth projects. Contact Stephen Harris if you would like more information asap and pass the word onto local groups.

### **A.O.B**

The Neighbourhood Plan will be officially relaunched at the next council meeting.

PE - can we add NP to Feb agenda, the idea being to use the TT to help promote, plan & spread the word

Wilton Hill will be part of the Neighbourhood plan

Wilton has been allocated a Wiltshire Officer to help with the NP. The officer will give a presentation to the Town Team as will Cllr Seviour who is heading the NP committee

JG apologies for next meeting

**Meeting closed 8.48pm**

**Date of next meeting:** 7.30pm Thursday 15th February 2018





January 2018

## Overview

NHS Wiltshire Clinical Commissioning Group (CCG) is responsible for commissioning a broad range of healthcare for the population of Wiltshire. We are led by experienced local GPs drawn from across the county, who provide clear clinical leadership to the big decisions affecting the future of healthcare provision in Wiltshire, carefully tailored to meet the differing needs of people locally.

Our vision is to ensure the provision of a health service which is high quality, effective, clinically-led and local. We are committed to delivering healthcare that meets the needs of Wiltshire people, to consult and engage with our population to enable them to be involved in decisions made about health services and to deliver those services to people in their own homes or as close to home as possible.

**The right healthcare, for you, with you, near you**

## News from the CCG!

### Winter Pressures guidance issued from NHS National Emergency Pressure Panel

NHS England has issued guidance in line with the new Winter Pressures Protocol. The guidance, which is issued to hospitals, extends the deferral of all non-urgent inpatient elective care to free up capacity for the sickest patients to January 31. The panel reiterated that cancer operations and time-critical procedures should go ahead as planned. Over and above this, day-case producers and routine outpatient appointments should also be deferred where this will release clinical time for non-elective care.

For more information read the [official letter from Pauline Phillip](#), National Director, Urgent and Emergency Care, NHS England and NHS Improvement to systems, and the [press statement](#) from the National Pressure Panel.

### Out of hours service for children in South Wiltshire

An out of hours GP service for children aged 0 – 10 years in Salisbury and South Wiltshire means parents can now book a same day appointment to see a GP at the Salisbury Walk in Health Centre.

This extended service will provide out of hours GP health advice and treatment for minor illnesses and injuries from Monday to Friday between 6.30pm – 10pm, and will provide partners with a local alternative to A&E when their child is ill.



Parents should ring NHS 111 to access the service. If necessary, the call handler will then advise parents to contact the Salisbury Walk in Health Centre to make a same day appointment.

### Urgent GP appointments – where would you go?

If you need a same day urgent GP appointment – this could mean that you might not be able to see your usual GP and you may have to travel to a different practice.

Urgent GP appointments are booked on the day and are for patients who have health problems which cannot wait for a routine appointment.

We want to hear your views on accessing urgent GP appointments.

Tell us what you think by completing this [short survey](#).



### Have your say on the organ donor 'opt out' consultation

People who donate their organs and tissue after they die help save thousands of lives in England each year. However, 3 people die a day due to lack of suitable organs. Under current rules, a person who has died can only be an organ donor if they have agreed to it when they were alive.



If the law changes, people will be considered to be an organ donor unless they have opted out. This would increase the number of organs donated and save more money.

The Department of Health's 'opt out' [consultation](#) is now live – take a few minutes to share your views on the proposed new rules.

## Campaign – stay well this winter

Winter can be seriously bad for our health, especially for people aged 65 or older and people with long term conditions.

The cold and damp weather, ice, snow and high winds can all aggravate any existing health problems and make us more vulnerable to illnesses that are more common in winter.

We have put together some handy information to help you stay well this winter.

**Stay well this winter  
and have the flu jab**



## Have you had your flu vaccination?

Flu strikes in winter and can be far more serious than you think – it can lead to serious complications such as bronchitis and pneumonia and in some instances it can be deadly.

That's why it's important that people who are at increased risk from flu, have their free flu vaccination.

If you are:

- Pregnant
- Aged 65 or over
- Have a long term health condition
- Living in a residential care home
- A carer
- Living with someone who is immunocompromised
- Are a frontline health or social care worker

This year more children are being vaccinated, and children over 6 months old with a long term health condition, and children aged two and three are offered the vaccination in general practice.

Children in reception class and school years 1, 2 3 & 4 will be offered the vaccine at school.

If you're eligible for a free flu vaccination and not yet had it, speak to your surgery and make an appointment today!

### Get advice from your pharmacist

Winter can make existing health problems worse, so if you feel you are coming down with something, even if it's just a cough or cold, don't wait until it gets worse – act quickly and get advice from a pharmacist.

Pharmacists are fully qualified to advise you on the best course of action when you start to feel unwell, and this can be the best and quickest way to help you recover and feel healthy.



Most pharmacies now have a private consultation area, so you can discuss your health issues in confidence and you don't need to make an appointment.

### Is your medicine cabinet fit for the winter?

Be prepared for common ailments by keeping a well stocked medicine cabinet at home.

#### What to keep in your medicine cabinet

<b>Painkillers</b>  Aspirin, paracetamol and ibuprofen are highly effective at relieving most minor aches and pains.	<b>Antihistamines</b>  Useful for dealing with allergies, insect bites and hay fever.
<b>Oral rehydration salts</b>  Oral rehydration salts can help restore your body's natural balance of minerals and fluid lost through diarrhoea, fever, and vomiting - if you can't continue your normal diet.	<b>Indigestion treatment</b>  If you have stomach ache, heartburn or trapped wind, a simple antacid will reduce stomach acidity and bring relief.
<b>Anti-diarrhoea tablets</b>  It's a good idea to keep anti-diarrhoea medicine at home as diarrhoea can happen without warning. Causes include food poisoning and a stomach virus.	<b>Suncream</b>  Keep a suncream of at least factor 15, with UVA protection. Exposure to the sun can cause sunburn and increase your risk of skin cancer.

Always keep medicines out of the reach



## Celebrations as Healthwatch Wiltshire gets national recognition



(from left) Volunteers Mick and Marilyn Stowe with Stacey Plumb and Lucie Woodruff from Healthwatch Wiltshire

Volunteers and staff at Healthwatch Wiltshire are celebrating after being recognised by a prestigious national award for its excellent volunteering programme.

The Investing in Volunteers accreditation - the UK quality standard for good practice in volunteer management - has been awarded to Healthwatch Wiltshire, which has more than 60 volunteers on its books.

A celebration event was held at Melksham Football Club to thank all the volunteers for giving their time to gathering feedback on local health and care services over the last year. And a special cake was made to celebrate the achievement.

Stacey Plumb, Volunteer Officer at Healthwatch Wiltshire, said: "We're thrilled to be recognised with this quality standard! Investing in Volunteers aims to improve the quality of the volunteering experience and for organisations to acknowledge the enormous contribution made by these dedicated volunteers."

The Investing in Volunteers award is the gold standard for organisations who work with volunteers. Assessors from Investing in Volunteers visited the offices in Melksham to chat to volunteers and staff, and see its work in action. Healthwatch Wiltshire was assessed against a range of best practice standards and proved to excel in all aspects of working with its volunteers.

Helen Davies from Malmesbury, who has been a volunteer with Healthwatch Wiltshire for 18 months, said: "As a Healthwatch volunteer I have been involved in numerous projects, engaging with the public to get their views regarding the NHS.

"The Investing in Volunteers award that Healthwatch Wiltshire has recently received reflects the standards that are expected of us, as volunteers and the standards we can expect from the team. Volunteering with Healthwatch is a two way process which gives us the feeling of being valued, well trained and ultimately making a professional difference to the organisations we represent."

Investing in Volunteers is managed by the UK Volunteering Forum and delivered by NCVO, Volunteer Scotland, Volunteer Now in Northern Ireland and Wales Council for Voluntary Action. Further information about the award, which will last for three years, can be found on [iiv.investinginvolunteers.org.uk](http://iiv.investinginvolunteers.org.uk).

Or to find out more about volunteering with Healthwatch Wiltshire visit: [healthwatchwiltshire.co.uk/volunteering](http://healthwatchwiltshire.co.uk/volunteering).



### Contact us:

Tel 01225 434218

[info@healthwatchwiltshire.co.uk](mailto:info@healthwatchwiltshire.co.uk)

[healthwatchwiltshire.co.uk](http://healthwatchwiltshire.co.uk)

Healthwatch Wiltshire is a local independent organisation which exists to speak up for people on health and care. If you have used a service recently then we would like to hear from you. We use what people tell us when we meet with the commissioners and providers of services to make sure that they take account of your views and experiences.



## New CEO of Wiltshire's independent health and care champion announced

The community interest company which runs the Healthwatch Wiltshire service has announced the appointment of a new Chief Executive Officer.

Evolving Communities CIC has hired Mary Curran to replace Emma Cooper, who announced in October she would be leaving to take up a post with a national charity. Emma left on 19 January to begin her new role after being in the CEO post for the last four years.

Mary, who will start in April, brings extensive skills and experience gained from working in a range of roles across local government as well as the charity sector. She has previously worked at Wiltshire Council, managing professional teams and supporting vulnerable young people, before becoming the Lead Commissioner for Disabilities for the council's children's services.

For the last four years, Mary has been the CEO of the North-East based learning disability charity Journey Enterprises, working across six local authority areas in the North East. The charity and social care provider works with around 200 adults with learning disabilities to help them become independent through supported employment and enterprise opportunities.



Mary Curran

Now Mary, a mother of three grown-up children, is looking forward to relocating back to the South West with her partner Andrew to take up the CEO position at Evolving Communities, the parent company which runs the Healthwatch Wiltshire service.

Mary said: "Healthwatch is so important in making sure that local people's voices are heard. It's up to us to champion people's views on the quality of services they experience and what they want to see change in their area. I'm looking forward to building on the excellent foundations laid, and sharing good practice across Wiltshire. I am delighted to have been appointed and am really looking forward to getting started."

During her first 100 days as CEO, Mary plans to meet staff, volunteers and stakeholders to understand local issues and concerns. She continued: "The first 100 days in a new role are a really valuable time for a CEO. You don't yet know the detail of the organisation, so you can use the time to ask 'Why?' which really has its advantages.

"I will be meeting with all our staff, volunteers and stakeholders, asking many questions and developing a shared understanding of the 'as is' across the county. I'll be taking every opportunity to get to know the business, the people involved and how it functions. I'll also be focussed on understanding the health and social care issues that local people really care about, because that's why we are here.

"Strategy and plans will take shape, focussing the work of Healthwatch on the right issues, to deliver a first-class service for local people. I suspect concerns in the three areas will reflect those we hear so much about in the national news, such as; our hospitals struggling to cope with demand, cuts in budgets affecting social care provision, young people's access to mental health provision

Continued >

### Contact us:

Tel 01225 434218

[info@healthwatchwiltshire.co.uk](mailto:info@healthwatchwiltshire.co.uk)

[healthwatchwiltshire.co.uk](http://healthwatchwiltshire.co.uk)

Healthwatch Wiltshire is a local independent organisation which exists to speak up for people on health and care. If you have used a service recently then we would like to hear from you. We use what people tell us when we meet with the commissioners and providers of services to make sure that they take account of your views and experiences.

and the needs of our growing elderly population.

“However, as far as local issues are concerned, I don’t know, and I don’t intend to jump to any conclusions. I look forward to listening to local people and reflecting their concerns in the work that we do.”

Chris Graves, chair of the board at Evolving Communities, said: “We are of course very sad to see Emma leave us but we wish her well in her future endeavours. She has made a fundamental contribution to developing and establishing our organisation.

“While we will miss her, the foundations she has laid will make it possible for us to move forward to the next stages of developing Evolving Communities with confidence. We are thrilled to welcome Mary who has an excellent background in leading similar organisations, and I am confident we will build on our past success.”



Emma Cooper





## **Summary of Activities from October 2016 to September 2017 Health and Well Being Champion Tisbury and Mere Rural areas**

Villages covered Stourton and Gasper, Kilmington, Zeals, Mere, West Knoyle, East Knoyle, Chicklade and Pertwood, Hindon, Semley and Sedgehill, Donhead St Andrew, Donhead St Mary and Charlton, Ansty, Chilmark and Berwick St John, Swallowcliffe, Sutton Mandeville, Tisbury, West Tisbury and Wardour, Tollard Royal, Alvediston, Berwick St Leonard, Fonthill Gifford and Fonthill Bishop.

**The main roles assigned to the new champions (AM Dean, Mere and Tisbury and V O'Keefe, Wilton) were to:**

- Champion the voice of vulnerable people in the Mere, Tisbury and Wilton Community Areas.**
- Help to establish a new sub-group of the Area Board, a Health and Wellbeing Group looking at looking provision and priorities. The first meeting for this group will be held in December 2016.**
- Develop connections with local support groups.**
- Monitor and report on the quality and effectiveness of local activities, and make recommendations for future provision to the Area Board.**

Throughout the year I have attended a Champion Training Day in Devizes, meeting the older peoples champions and other health and wellbeing champions from Wiltshire, a champions forum organised for the Health and Wellbeing champions and older people's champions across Wiltshire as well as receiving training on falls, healthy consultation, carers awareness and what success would look like. My training has also included Sight loss awareness

In December I worked to extend invitations to group members for attendance at the JSA in Tisbury as well as taking the lead on one of the tables at the event.

A large and time consuming project was to develop spreadsheets to encompass all the activities which are being held across South West Wiltshire and research and update these sheets. These have been completed and issued to relevant users. As a result it was possible to analyse and produce a village review of where there are shortfalls in activities.

Following on from this was the attendance at a number of groups within the South West to begin monitoring their effectiveness. These included the Mere Day Centre, Church cafes, T@3's, Nosh and Natter, Community Lunches, Sunshine Group. Group leaders were contacted and time was spent out and about including Mere, Ludwell, Donheads' and Berwick St John talking to residents. Visits were made to local Doctors surgeries, Attendance at the Tisbury Community Safety partnership, liaison with Dementia friends' champions to broaden the coverage of Dementia friends in our area. Community engagement with Youth groups of Tisbury (George V sports day and Mere (Seeds 4 Success Teas in Mere and Donheads). I attended various summer fetes and fayres and manned a stall at the WSUN 25<sup>th</sup> Anniversary day and at the Nadder Campus opening.

I have reinforced my connections with Health watch, Alzheimer's Support, Alzheimer's Society, Age UK, The SW care coordinator Active Alive and the Wiltshire and Swindon user's network.

As Dementia and social isolation were 2 of the areas identified by the JSA in December I attended a Dementia Awareness meeting to identify the actions required if SW Area board gives its approval for the S. West Area to become a dementia Action Alliance and became the Dementia Champion for East Knoyle. I have also participated in workshop meetings of the Dementia Action Alliance and Dementia Forum's in Trowbridge and Salisbury and attended Dementia past and present at Salisbury cathedral.

As I am well known in both Tisbury and Mere from my previous role in the area as a Wiltshire Good Neighbour I am continually approached by residents for assistance with their problems- throughout the year these have included, residents were asking for help re winter warmth, moving house and liaison with Homes 4 Wiltshire, abuse, finance, DVLA and dementia, social isolation, carers, problems re a resident at Nadder Close, burglaries.....

I am an active member of the SW Wiltshire Health and Wellbeing group and Have investigated possible methods to eliminate Social isolation and loneliness in SW Wiltshire with Sunday Teas, Chat Maps, alternative Pop up cafes and a day centre in Tisbury

Time has been spent to identify if I could develop a Memory Group in Mere run on the same lines as the one I have developed in Tisbury. I have assisted with the Chilmark emergency plan and have been helping progress the provision of Safe places within the South West and have handed out over 200 ice cards to potentially vulnerable people.

I assisted with the planning and coordination of the Health Fair in September I liaised with Tisbury Parish Council re justification for the start-up of Carers Support café and their funding and I launched a pop up café in Hinton Hall on alternate Wednesdays to complement the Memory Group.

An application has been placed for funding for the development of the Sensory Garden in Tisbury which is a project instigated by myself for and on behalf of the Tisbury Memory Group and Tisbury Community.

I continue with my voluntary community work running the Sunshine Group, Pop up Café and The Tisbury Memory group which directly complements the work carried out as the Health and wellbeing champion.

Future developments over the next 6 months include

- Continuing with the pop up café in Tisbury with the involvement of local surgeries.
- The planning, preparation and implementation of the sensory garden in Tisbury now that the ownership of the land has been finalised.
- Develop a carers support pop up café in Mere
- Develop if possible, further teas in surrounding areas
- The introduction of chat maps in Tisbury and Mere
- Investigate the possibility of Big Breakfasts
- The introduction of music and movement of health workshops.
- Update the village spreadsheets.

This has to be dependent on the availability of volunteers. I only work 5 hours a week and am spread pretty thinly across the area!

Ann-Marie Dean 21<sup>st</sup> November 2017

Statement – Val O’Keefe

In the last 12Months I have continued to support & refer The S.W.Rural Community, by way of Health & Social isolation as The older Persons Champion. I continue to take Telephone calls from sometimes desperate, lonely & isolated older people, I feel I am there to talk to. They can call on and trust me (which is desperately required) Myself & Ann-Marie had a large input in having The very successful Health Fair at The Nadder Centre, Tisbury in 2017 and I believe The Networking has continued and I have continue to refer.

I am now under the ‘Umbrella’ of Wilton's Land Trust but I will continue to support any person who requires my help or support in The area I cover.



# Chairman's Announcements

<b>Subject:</b>	<b>Office of the Police and Crime Commissioner 2018 Precept Proposal Consultation</b>
<b>Officer Contact Details:</b>	<a href="mailto:pcc@wiltshire.pcc.pnn.gov.uk">pcc@wiltshire.pcc.pnn.gov.uk</a>

## **Residents asked if they would pay an extra £1 a month to protect local policing**

*"Would you be prepared to pay an extra pound a month to protect our police Force?" That's the question being asked by Police and Crime Commissioner for Wiltshire and Swindon Angus Macpherson.*

*The policing precept consultation which launches 2 January is looking for the views of Wiltshire residents on the proposed increase of £12 a year.*

*Currently the average band D household contributes £14.19 per month to local policing, but if residents back the proposal then this would rise to £15.19 per month.*

*Angus Macpherson said, "As a Force, Wiltshire Police has seen the second highest increase in demand across the country in the last year yet the funding we receive from central government doesn't recognise the increasing pressures our service is under.*

*"In fact we receive the fourth lowest funding per head of population in England and Wales.*

*Since 2010, Wiltshire Police has received £19 million less but have been responding to more crimes and supporting more members of the public year on year.*

*Mr Macpherson added, "Whilst we live in an incredibly safe county, there's only so far the budget will stretch and we're streamlining our services to ensure they're as efficient as possible at the same time as keeping the public safe, but we are feeling the squeeze more than ever.*

*"Without this increase Wiltshire Police will have to look at further reductions in officers and staff to close a budget gap of around £3m.*

*"That's why I'm asking whether residents in Wiltshire and Swindon would be prepared to pay an extra £1 a month to help bridge this gap.*

*"This increase will mean that I can protect frontline services from further reductions and maintain the current level of service."*

*The consultation which runs from 2nd January 2018 to midday 31st January 2018 wants to hear your views on the proposed increase.*

*For more information on how to share your views please visit [www.wiltshire-pcc.gov.uk](http://www.wiltshire-pcc.gov.uk), you can also email [pcc@wiltshire.pcc.pnn.gov.uk](mailto:pcc@wiltshire.pcc.pnn.gov.uk) or use #AskAngusPCC on social media.*



# Employment and Community Skills

Wiltshire Employment Support Team & Wiltshire Supported Internships

Contact: [West.cc@wiltshire.gov.uk](mailto:West.cc@wiltshire.gov.uk)

## Wiltshire Employment Support Team

Better known as WEST is a supported employment service for young people and adults with special educational needs and disabilities, including autism spectrum conditions. We aim to support our customers to find and keep a job.

We are part of the Special Educational Needs and Disabilities Service at Wiltshire Council. We also provide support to Adult Care customers, so we support people from 14+.

## What is Supported Employment?

A well defined approach to helping people with disabilities participate in the competitive labour market, helping them to find meaningful job and providing ongoing support from a team of professionals.

## Where do we work?

All over wiltshire, if you meet eligibility and have a Wiltshire post-code, we can work with you.

Working with employers local to Wiltshire or within reasonable travelling distance, that could be in Hampshire, Swindon or other neighboring towns or counties.

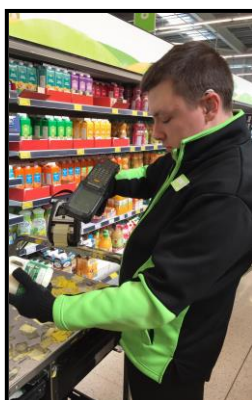
## What do we want?

For as many people to know of our service and that there is a pool of untapped talent and willing workforce in Wiltshire that could be of great benefit to employers.

We want the opportunity to meet with local employers to talk about their business and recruitment needs and negotiate positive employment opportunities for our customers.

Most of all we want to do what we can to level the playing field for people with higher support needs so they can compete to get jobs.

Research shows that only **6%** of people with a **learning disability** and **15%** of people with **autism**, are in **paid employment**, yet most **want to work** (Mencap).



## The Team

We choose our Job Coaches for lots of different skills. Most of all their work ethic and what they can do to negotiate work opportunities with local employers. We know our stuff. We don't know everything, but we have a strong reputation.

The team are supportive, but they are not support workers.

Job Coaches specialise in employment, with the added bonus of previous backgrounds ranging from education to business.

## Our priorities

### Everyone has the right to work

and we are committed to helping people with higher support needs do that.

### Getting a job is the top priority

supporting applications, interviews and on the job support. Speaking to employers and negotiating opportunities

**The right support** supporting customers in a person centred, but realistic way

**Employer relationships** employers in Wiltshire are our customers too and we value how pro-active and inclusive they can be. We work to maintain positive relationships and are on hand to provide support to them in making employing someone through our service smooth.

## We only deal in paid work

*If a paid job isn't what you are looking for then we are not the right service for you*

We can signpost you to other places if you need it but we cannot support you with anything that isn't paid work. We don't want to lose our focus.

**Community Connecting** is another part of our wider team and they specialise in supporting people with inclusion to their local community, including joining a club, travel training and volunteer work.



## Wiltshire Supported Internships

Supported Internships are designed for young people who really want to move into employment from education.

A study programme for a young person with learning disabilities or autism that want to move into employment and need extra support to do so. An important element is the opportunity for an extended work placement with the potential for a job offer at the end. We call these 'Working Interviews'.

'Aim to equip young people with the skills needed for work so they can achieve sustainable paid employment. The programme includes on-the-job training, backed by expert job coaches and college based learning'

**Department for Education**

## What do we want from employers in Wiltshire?

**a job vacancy** that you are prepared to offer as a working interview with a view to becoming a paid job, **or**

**a carved position** that matches the intern where a paid position can be given when they display the skills required consistently

**regular feedback** that includes gaps in knowledge (support can then be put in place for this learning)

✚ Working interviews will ideally be 16 hours a week for an agreed length of time. Normally between 6-12 weeks

✚ hours can be flexible and could start on lower hours gradually increasing

We are asking for your involvement in the process and to consider reasonable adjustments to level the playing field for your intern



We are asking for a commitment to work with us, using a flexible approach to recruitment

**Real job vacancies that have a real chance of becoming a paid job!**

## Who have we worked with?

We have successfully worked with many employers over the years, who have employed our customers, these include:

Morrisons	Warminster
NHS	Salisbury
Castle & Ball	Marlborough
Foxhangers	Devizes
Drove Primary	Swindon
Tool Station	Chippenham
Royal Oak	Corsham
Green Dragon	Market Lavington
MOD	Lyneham
Order of St Johns	Wooten Bassett
EMCOR	Porton Down
Bath Aquaglass	Bath
McDonalds	Trowbridge
Leekes	Melksham
Honey's Dog Food	Pewsey



**We would love the opportunity to talk to you more about our team(s).**

Please watch our video and we welcome any comments or queries

[West.cc@wiltshire.gov.uk](mailto:West.cc@wiltshire.gov.uk)

**Samantha Buchanan**



<b>Subject:</b>	<b>Public Space Protection Orders</b>
<b>Contact Details:</b>	<a href="mailto:ASB@wiltshire.gov.uk">ASB@wiltshire.gov.uk</a>

### PSPOs

Public Spaces Protection Orders (PSPOs) are one of the tools available under the Anti-social Behaviour, Crime and Policing 2014 Act and replace Designated Public Place Orders (DPPO). New Guidance issued by the Local Government Association stated that any Orders in existence post 21 October 2017 would automatically be transferred to include any conditions covered by the DPPO. This applies to orders in: Trowbridge, Salisbury, Calne, Chippenham, Devizes, Durrington, Malmesbury and Warminster.

The legislation recognises that councils are often best placed to identify the broad and cumulative impact that ASB can have and additional conditions can be applied for. They must be evidence based and must not be covered by other primary legislation.

Councils can use PSPOs to prohibit specified activities, and/or require certain things to be done by people engaged in particular activities, within a defined public area. PSPOs differ from other tools introduced under the Act as they are council-led, and rather than targeting specific individuals or properties, they focus on the identified, evidence based problem behaviour in a specific location. Any conditions must be consulted on.

The legislation provides for restrictions to be placed on behaviour that apply to everyone in that locality (with the possible use of exemptions). Breach of a PSPO without a reasonable excuse is an offence. The enforcement will be managed by Wiltshire Police, they will issue fixed penalty notices which can incur fines of up to £1000. Alcohol conditions covered by the Orders can incur £500 fine if breached.

Wiltshire Council is keen to work with individuals to change their behaviour. Working with our drug and alcohol service, recipients of fines will now have the option to attend a drug and alcohol course to waiver the fine payment.

New signage is on order and the webpages will be updated to reflect this recent change in legislation.

For further information please contact [ASB@wiltshire.gov.uk](mailto:ASB@wiltshire.gov.uk)

### Fixed Penalty Notices

A Police Officer may issue an FPN to anyone they have reason to believe has committed an offence and breached the PSPO without reasonable excuse under section 67 of the Anti-social Behaviour, Crime and Policing 2014 Act. The FPN should only be issued to over 18s.

This also applies in the case of orders that prohibit alcohol consumption, where it is reasonably believed that a person has been or intends to consume alcohol. It is an offence under section 63 either to fail to comply with a request not to consume or to surrender alcohol (or what is reasonably believed to be alcohol or a container for alcohol).

The front copy should be handed to the recipient and the second retained for your records. Wiltshire Council must be notified via [ASB@wiltshire.gov.uk](mailto:ASB@wiltshire.gov.uk) with a scanned copy of the FPN. This will enable the Council to prosecute if necessary.

There will also be an option to attend a Wiltshire substance misuse service course to waive the fine. The information is contained on the back page of the FPN and should be handed to the recipient at the time of issue. The Officer should make the recipient aware that this option would waive the fine payment.

Officers should consider circumstances where there may be a 'reasonable excuse' for breaching the Order. It may also provide a further opportunity, to recognise that those responsible may themselves be vulnerable and in need of support. They should therefore consider appropriate referral pathways where there are any safeguarding concerns.

A copy of the PSPO conditions can be found on Niche.

For further information please contact [ASB@wiltshire.gov.uk](mailto:ASB@wiltshire.gov.uk)

<b>Subject:</b>	<b>The new one-stop shop Work Wiltshire website</b>
<b>Contact Details:</b>	<a href="https://workwiltshire.co.uk/">https://workwiltshire.co.uk/</a>

### **Key message:**

On the 4<sup>th</sup> July, the new Work Wiltshire website launched. This is a unique website containing a huge range of education, employment and skills information which would normally have been located on several different sites and can now be found in one location with signposting to other relevant sites.

This website has been made to be accessible, attractive and a professional information hub. By having a one-stop-shop website, it will enable us to become the go-to place for career information, advice and signposting to relevant sites that the customers are looking for.

Work Wiltshire website contains information and links for: next steps in education, apprenticeships, information for employers, support available for those with barriers to work, information for those looking for work or wanting to upskill, financial support, further and higher education, local projects, support for schools and policies and data.

### **Questions:**

#### **How we set it up?**

The Work Wiltshire website was originally created to support employers, employees and those looking for work. It then expanded to cover the programmes that the Employment and Skills Service were running, as well as providing career information, labour market intelligence, Wiltshire statistics, news and events and the services strategy.

The Employment and Skills service decided expand the website further and extend the range of audiences it catered for and allow them to access all the information they may need in one location. The redevelopment of the website was funded by Action 4 Wiltshire and has engaged with key stakeholders throughout the development to make sure that the website will work as effectively as possible and include tailored information to the different users.

#### **Who were involved?**

The main development of the website was conducted by the Employment and Skills Service at Wiltshire Council with stakeholders from Children's Services, Employment and Community Skills, local schools, Carer Support Wiltshire, Community First as well as others, contributing content and feedback to ensure the website is relevant, engaging and accessible.

### **What we are hoping to achieve?**

A helpful and credible website which enables local people and employers to find the key information and links they would like to know in one location.

### **Is this a model used elsewhere?**

Other websites focus on specific sections which are included on the Work Wiltshire, but to our knowledge the combination of having all education, employment and skills information for young people, the general public, those with barriers to work and employers, all in one location is unique.

### **What has been the website take-up so far?**

Since its launch we have had over 3,540 people use our website looking at 13,175 pages, with a wide variety of age demographics. The most popular pages so far being apprenticeships information for employers, apprenticeships, support for schools, and young people's next steps.

### **What can it do for people?**

People will be able to search through the different sections on the website to find out education, employment and skills information. There is also a news section and events page, which shows the Employment and Skills service blog, local vacancies, Higher Education open days and much more.

It will help employers with find information and support for their business including how to set up an apprenticeship, free HR support, how business can get involved in local programmes, grants and other information.

It also has a dedicated section to help schools with careers education, giving information of local support, provision, the Wiltshire Careers Education Programme and support helping them arrange careers events.

It also has a section for those with complex needs and barriers to work; which highlights what support there is for them.

**SOUTH WEST WILTSHIRE COMMUNITY AREA TRANSPORT GROUP  
(CATG)**

---

**NOTES OF THE SOUTH WEST WILTSHIRE COMMUNITY AREA TRANSPORT  
GROUP (CATG) MEETING HELD ON 10 JANUARY 2018 AT NADDER CENTRE,  
TISBURY.**

---

10 **Note Tracker**

Please refer to the attached Note Tracker.

If you have any questions about the attached Note Tracker please contact:  
Julie Wharton, (Senior Traffic Engineer)  
direct line: 01722 434329  
e-mail: [julie.wharton@wiltshire.gov.uk](mailto:julie.wharton@wiltshire.gov.uk)

This page is intentionally left blank

SOUTH WEST WILTSHIRE COMMUNITY AREA TRANSPORT GROUP 10 JANAUARY 2018

	Item	Update	Actions recommendations	Who
1.	<b>Attendees and apologies</b>			
	Present:	Wiltshire Cllrs Tony Deane (Chair), George Jeans Richard Botten, Michael Pont (Stoford & South Newton PC), Richard Mitchell (Tollard Royal PC), Frank Freeman (Hindon PC), Sandra Harry (Tisbury & Donhead St. Andrew PC), Clare Churchill (Donhead St Mary, Fovant & Quidhampton PC's), Gary Rowitt (Dinton PC), Mike Ash (Bishopstone PC), Steve Banas (Swallowcliffe PC), Tim Martin, Juliette Foy (Ansty PC), D. W. Marks, Ruth Burrow, Nick Hoare (Stourton & Gasper PC),  Principal Engineer - Julie Wharton, Community Engagement Manager - Stephen Harris, Area Highways Engineer - David Button		
	Apologies:	Wiltshire Cllr Jose Green, Bridget Wayman, Pauline Church, Tony Phillips Fovant PC, Sheila Sheppard Barford St Martin PC, Transport and Development Manager (North and East) - Spencer Drinkwater, Roy Sims Mere TC		
2.	<b>Notes of last meeting</b>			
		The minutes of the previous meeting held were agreed at the South Western Wiltshire Area Board meeting on Wednesday 6 December 2017.  <i>A link can be found on the Wiltshire Council website <a href="#">here</a></i>		
3.	<b>Financial Position</b>			
		The finance sheet was presented. There is currently £14093 unallocated.		

<b>4.</b>	<b>Substantive Bid</b>			
a)	New Road, Zeals (Mere)  30mph speed limit & traffic management measures.	CATG to fund £10k. PC to fund £5000.  The work is currently taking place and the construction work is due to be complete by 19 January. Lining works will be weather dependant.	The area board notes the update.	JW
b)	Issue No: <a href="#">2968</a>  A30 at Brook Hill - Request for VAS on	<i>The bid was unsuccessful; the decision report can be found here <a href="https://cms.wiltshire.gov.uk/ieDecisionDetails.aspx?ID=1244">https://cms.wiltshire.gov.uk/ieDecisionDetails.aspx?ID=1244</a></i>  As the bid has been unsuccessful on two occasions the group agreed to close the issue.	The area board notes the update and that the issue will be closed.	
<b>5.</b>	<b>Top 5 Priority Schemes</b>			
a)	Issue <a href="#">4363</a>  C283 Stoford. Weight limit and traffic calming	The CATG has agreed to put forward the C283 for Freight Assessment and Priority Mechanism (FAPM) assessment in 2018/2019.  CATG agreed to fund £3000 towards a lining scheme. PC to fund £500 from this financial year and £500 from next financial year. Scheme needs a road closure, so will be programmed to take place in 2018/2019. This is being managed as part of the wider surfacing programme so suggest that this is replaced with another top 5 priority.  Stoford PC representative expressed concern that as this scheme is no longer one of the top 5 priorities it might not be completed.  The group agreed to replace this with 7a.	The area board notes the update.	JW
b)	Issue No: <a href="#">4644</a>  Signing of Tisbury South via Ansty.  Ansty Coombe Lane	JW presented a scheme to sign light traffic through Fovant at the junction of A30/Fovant and Swallowcliffe at the junction of the A30 and the C316. Ansty PC requested that an additional sign was added at the junction of the High Street and Yule Hill. Approximate cost of scheme £1000, Ansty PC to discuss contribution. JW to send scheme details to PC's.  CATG to fund £150. PC to fund £100. The work has been instructed, the sign will	The Area Board notes the updates.	JW  JW

Page 58

Page 4



	<p>“Unsuitable for HGV’s” sign</p> <p>Measures to prevent vehicles damaging properties at the northern end of the village.</p>	<p>be in place by end of March 2018. The work has been completed.</p> <p>The group agreed that this would be one of their roads for Freight Assessment and Priority Mechanism (FAPM) in 18/19.</p>		CATG
c)	<p>Issue <a href="#">4790</a></p> <p>The Causeway, Broad Chalke New footway</p>	<p>Broad Chalke Parish Council (BCPC) has funded the entire cost of the scheme. The detailed design and legal agreements are being progressed but are resource intensive. The scheme is to be constructed in 2018/19.</p> <p>The work to transfer the land is currently taking place.</p>	The Area Board notes the updates.	JW
d)	<p>Issue <a href="#">4902</a></p> <p>Mill Lane, Bishopstone Single track warning signs.</p>	<p>CATG to fund £350. PC to fund £150.</p> <p>The signs have been ordered and should be in place by the end of March 2018. JW to send copy of sign face wording to PC.</p> <p>The group agreed to replace this with 7e.</p>	The Area Board notes the update.	JW
e)	<p>Issue <a href="#">5652</a></p> <p>B3092 Stourton - Double white lines</p>	<p>JW has undertaken a desktop study of the section in question and there are some lengths that appear to be borderline for a solid white line, be this a double white line or single solid line on one side, therefore the CATG could fund a full survey.</p> <p>Any system of lining needs to be consistent across a reasonable length of the B3092 so the survey would need to be carried out between Maiden Bradley and New Road. The survey is resource intensive, due to the number of men necessary and the need for a rolling crash cushion, therefore the cost is approximately £4500.</p> <p>PC and GJ objected to the need to include the extent of the B3092 that was required to be surveyed. They are only concerned about the section near the junction with Stourhead and not the rest of the road. JW explained that Wiltshire Council has to consider the entire network rather than isolated sections.</p> <p>CATG agreed to prepare a brief for an independent Highways expert to look at the</p>	The Area Board notes the updates and agrees to fund £4500 for the survey.	JW

		length of the B3092 bearing in mind the 400,000 per year visitors to Stourhead gardens. This to be done in conjunction with National Trust who will be expected to make a contribution towards the eventual scheme cost.		
<b>6.</b>	<b>Work instructed</b>			
a)	Issue No: <a href="#">4629</a> West Street, Barford St. Martin Bollard to protect thatched roof.	CATG to fund £200, PC to fund £200.  The work has been instructed and will be installed by the end of March 2018.	The Area Board notes the update.	JW
b)	Issue <a href="#">4787</a> Church Lane, jcn Bridleway Tollard Royal Horse warning signs	CATG to fund £375. PC to fund £375.  The work has been instructed and will be installed by the end of March 2018.  <b><i>Post meeting note: the signs have been installed and therefore the issue can be closed.</i></b>	The Area Board notes the update and agrees to close the issue.	
c)	Issue <a href="#">4716</a> Fovant A30 - High St to Pembroke Fm Request for dropped kerbs	The CATG agreed to fund the scheme to progress the dropped kerbs in front of the car park. CATG to fund £900, PC to fund £300. The scheme has been ordered and will take place by the end of March 2018.	The Area Board notes the update.	JW
<b>7.</b>	<b>Other Priority schemes</b>			
a)	Issue <a href="#">4714</a> Steep Hollow, Dinton One way system	The group agreed to make this one of their top 5 priorities.	The Area Board notes the update.	CATG
b)	Issue <a href="#">4723</a> B3089, Chilmark HGV Signage.	This work is being progressed by the team at County Hall, as part of a scheme looking at how Tisbury is signed from the A303 and will involve working with Highways England.		

c)	<p>Issue <a href="#">4949</a></p> <p>Road between B3089 &amp; A303 Fonthill Bishop</p> <p>SLOW markings or a pinch point.</p>	<p>JW queried whether this issue is to be replaced by Issue <a href="#">5804</a>?</p> <p>Traffic Speed Survey Result Fonthill Bishop (30mph Speed Limit) - North of B3089 The Results of the survey for the area of Fonthill Bishop are provided below. The survey was carried out between 26/11/2017 and 07/12/2017. A total of 5964 vehicles were checked. The 85th percentile was 42.7mph (the 85th percentile is the speed at which 85% of the traffic is travelling at or below). This is 0.7mph over the threshold for Community Speedwatch so will be referred to the Police for a request for enforcement. Cllr Wayman has asked for this to be added to the CATG agenda to be considered for further engineering measures. As neither BW nor a representative from the PC was present, discussion was deferred to the next meeting.</p>	The Area Board notes the update.	BW/PC
d)	<p>Issue <a href="#">5109</a></p> <p>A30 - Barford St Martin between the junction of the B3089 and Tinkerbell garage.</p> <p>Request for pedestrian warning signs.</p>	<p>JW has looked at the existing signage that is in-situ and there is a significant amount of upright signs in place. There is a limit to the amount of information that a driver can take in whilst travelling along the road, therefore it is unlikely that adding to the signing structure would be of benefit to pedestrians. One possible option would be to add some additional 30 roundels or SLOW markings on the carriageway. As the PC representative was not present discussion was deferred to the next meeting.</p>	The Area Board notes the update.	CATG
e)	<p>Issue <a href="#">5356</a></p> <p>Mere B3092 &amp; B3095</p> <p>Improvements for pedestrian visibility at the junction.</p>	<p>JW carried out a land registry search but it is currently unregistered. GJ undertook to try and track down the landowners in conjunction with the Town Council. (Grubbing out the existing hedge and replacing it with post &amp; rail is key to improving visibility &amp; hence safety)</p> <p>CATG agreed to make it a top 5 priority.</p>	The Area Board notes the update.	GJ/TC
f)	<p>Issue <a href="#">5431</a></p> <p>Tisbury - Weaveland Road Improvement to pedestrian crossing.</p>	<p>The Parish Council fully funded a Pedestrian crossing assessment. The pedestrian count has taken place and the report is being prepared which will be sent to the PC in due course.</p>		JW

g)	Issue <a href="#">5514</a> Semley Village Hall; School Warning Signs	JW has contacted the Village Hall to establish whether or not they wish to proceed with this request.	The Area Board notes the update.	JW
<b>8. New Issues</b>				
a)	Swallowcliffe 20mph Speed restriction	The Area Board discussed this at their meeting on 6 December 2017 and it was agreed that £1500 would be set aside for the feasibility assessment, and £1000 coming from Swallowcliffe PC. Swallowcliffe PC to discuss at their meeting tomorrow.  Work will progress when made a top 5 priority.	The Area Board notes the update.	PC
b)	Issue <a href="#">5678</a> & <a href="#">5663</a>  Tisbury - Weaveland Road. Measures to prevent Ambulances and large vehicles getting stuck out side 9 Weaveland Road	Some temporary repairs have taken place and DB has arranged for further patching to take place. The group felt that this should be monitored to see if this makes a difference before considering additional signage.  PC to contact residents to see if they are happy with the surfacing.	The Area Board notes the update.	PC
c)	Issue <a href="#">5775</a>  Duck Street – Ebbesbourne Wake - Pedestrian warning signs.	The PC presented a map to show the locations of the 3 requested signs. JW stated that it would cost approximately £200 for the 3 signs provided they could all be erected on the existing posts. The group agreed to fund the signs providing the PC contributed a minimum of 25% to the scheme. PC to discuss at their next meeting.	The Area Board notes the update.	PC
d)	Issue <a href="#">5870</a>  Teffont Magna – B3089 to Farmer Giles Teffont Evas – B3089 to Tisbury Request for 20mph speed restrictions.	The group discussed the report published into the Bath and North East Somerset 20mph speed restrictions which can be found online here <a href="https://democracy.bathnes.gov.uk/documents/s47259/20mph%20Zones%20Review%20Report.pdf">https://democracy.bathnes.gov.uk/documents/s47259/20mph%20Zones%20Review%20Report.pdf</a>  The Department for Transport is currently carrying out its own review and the results of this are expected shortly. The group decided not to proceed with any further 20mph restrictions (apart from the scheme in Swallowcliffe if the PC decide to proceed) until the outcome of this review is known.	The Area Board notes the update.	

9.	Other items			
a)	White Lining	SH chasing contractors. Still several schemes to be completed. No payment has been made – request to be made for contractors to return to complete those that have worn out already. All queries & comments to be directed to Steve Harris the CEM	The Area Board notes the update.	SH
b)	Freight Assessment and Priority Mechanism (FAPM)	SD not at meeting therefore no update available.		SD
c)	Footway maintenance	<p>The CATG has been allocated £10247 to spend on footway maintenance.</p> <p>No requests have been received from the 3 towns therefore the group agreed to invite all parishes/towns to submit footways. DB suggested that re-construction was unlikely to be affordable and suggested that slurry sealing was a more appropriate treatment. These should be submitted by week ending 12 January 2018 as DB would need to visit each site to rank them. Please submit by email to DB. DB cautioned that only a limited number of footways would be able to be treated for £10k, however he would keep the rest on file for any future funding that became available.</p> <p>SH to send out an email.</p>	The Area Board notes the update.	DB
d)	A303	<p>Stonehenge Local Community Forum being set up by Highways England with reference to the A303 works. One representative from each group/town/parish is invited to attend. Nominations should be received by 19 January 2018.</p> <p>AD encouraged PC's to send representative to keep informed given the impact on the local area. PC's felt that as they mainly distant from the works it wasn't worth them attending. The group felt that they would rely on those that had agreed to go along to report back to the meeting, namely representatives from Dinton PC &amp; Fovant PC. Neither were present to comment.</p> <p>AD to raise the problem with the other AB Councillors as it might be better for a Wiltshire Councillor to attend and report back to Parishes via CATG.</p>	The Area Board notes the update.	AD

e)	HGV's & Sat Nav's	<p>Frank Freeman (FF) from Hindon PC reminded the group that the Wiltshire Councillors had agreed to contact their MP to lobby the DfT to bring in legislation that required vehicles to use a satellite navigation system appropriate for the size of their vehicle. FF reported the Wiltshire Council stance on this which was The advice provided by the Department for Transport was that they felt that legislation was not appropriate as Sat Navs are a driving aid and are not there to replace the judgement of a professional driver. As a Council we do not disagree with this stance and therefore have not lobbied against it and have no plans to do so.</p> <p>AD stated that PC's should also lobby their MP &amp; that he would contact WC Highways to confirm their position on this policy.</p> <p>FF requested that an update be brought back to the next meeting by the Wiltshire Councillors.</p>	The Area Board to discuss the update.	GJ/AD/B W/JG/PC
10.	<b>Date of Next Meeting: 18 April 2018, 14:00-16:00 Nadder Centre, Weaveland Road, Salisbury SP3 6HJ</b>			

## **South Western Wiltshire Community Area Transport Group**

### **Principal Engineer – Julie Wharton**

#### **1. Environmental & Community Implications**

1.1. Environmental and community implications were considered by the CATG during their deliberations. The funding of projects will contribute to the continuance and/or improvement of environmental, social and community wellbeing in the community area, the extent and specifics of which will be dependent upon the individual project.

#### **2. Financial Implications**

2.1. All decisions must fall within the Highways funding allocated to South Western Area Board.

2.2. If funding is allocated in line with CATG recommendations outlined in this report, and all relevant 3<sup>rd</sup> party contributions are confirmed, Southern Wiltshire Area Board will have a remaining Highways funding balance of **£8693**.

#### **3. Legal Implications**

3.1. There are no specific legal implications related to this report.

#### **4. HR Implications**

4.1. There are no specific HR implications related to this report.

#### **5. Equality and Inclusion Implications**

5.1 The schemes recommended to the Area Board will improve road safety for all users of the highway.

#### **6. Safeguarding implications**

6.1 There are no specific safeguarding implications related to this report.

This page is intentionally left blank



<b>South West Wiltshire</b>		
<b>Road</b>	<b>2018/19 Schemes (DfT Local Highways Maintenance Funding)</b>	<b>Treatment</b>
UC	Lower Chicks Grove to Lagpond Lane. (C24 to C317)	Surface Treatment
UC	Elcombe Lane, Alvediston	Surface Treatment
C380	C380 High Street to Gasper Street, Stourton	Surface Treatment
C297	Willoughby Hedge to West Knoyle (The Street)	Surface Treatment
C278	Wolverton to B3092	Surface Treatment
UC	Sling Orchard, Fovant	Surfacing
A350	A350 East Knoyle, The Turnpike	Surfacing
B3092	Castle Street, Mere - Carriageway Repairs	Surfacing
C62	Bennett Arms to Railbridge (Carriageway Repairs)	Carriageway Repairs
C25	C25 Hindon Lane (Carriageway Repairs)	Carriageway Repairs
B3081	B3081 Zig Zag Hill (Carriageway Repairs)	Carriageway Repairs
<b>Road</b>	<b>2018/19 Schemes (Additional sites with Investment Fund)</b>	<b>Treatment</b>
UC	Bells Lane, Zeals	Surfacing
A30	A30 Shaftesbury Road, Wilton	Surfacing
Various	Various Footways	Renewal

**2018/19 Schemes (DfT Local Highways Maintenance Funding)** are those schemes which could be implemented with DfT Maintenance block and Incentive funding (£16,139,000).

**2018/19 Schemes (Additional sites with Investment Fund)** are the additional schemes which could be included with the full 'Local Highways Investment Fund 2014 – 2020' (£21,000,000).

Note: Scheme Lists are provisional as budgets for 2018/19 have not been confirmed

<b>Road</b>	<b>South West Wiltshire reserve or future years sites</b>	<b>Treatment</b>
UC	Seniors Farm Lane Semley	Surfacing
UC	Weaveland Road, Tisbury	Surfacing
B3092	Castle Street, Mere	Surfacing
A350	A350 Hart Hill	Surfacing
C326	Back Lane Bowerchalke (Carriageway Repairs)	Carriageway Repairs
C279	Dukes Lane Kilmington	Surfacing
UC	Grovely Road Barford St Martin	Surface Treatment
B3089	B3089 Willoughby Hedge to A350 Stagger Cross	Surface Treatment
C277	C277 Teffont Magna to Dinton	Surface Treatment
C308	Crate Lane Street Lane loop	Surface Treatment
B3089	B3089 Stagger Cross to Barford St Martin	Surface Treatment

Note: Scheme Lists are provisional as budgets for 2018/19 have not been confirmed

# SW WILTS PAFIS PROPOSED FOOTWAY MAINTENANCE SCHEMES 2017/18

---

## **Sites being proposed for action, in priority order:-**

- 1/ Church Road/The Street East Knoyle – Adj to village shop: 78m<sup>2</sup> of resurfacing (c£3666)
- 2/ Church Street Tisbury – PH to No 53: 57m<sup>2</sup> of resurfacing (c£2679)
- 3/ The Street Teffont Magna – Cookes Cottage to Hillside: 108m<sup>2</sup> of resurfacing (c£5076)

## **Sites that could be added to any future programme (including any available major maintenance funding) – subject to further review at that time:-**

- The Square Mere – The Old Bakery to No2 Church Street: 264m<sup>2</sup> of Slurry Seal (c£4224\*)
- Adj to Salisbury Road to Park Drive Chilmark: 171m<sup>2</sup> of resurfacing (c£8036\*)
- Park Wall to Coronation Square Quidhampton : 274m<sup>2</sup> of slurry seal (c£4384\*)
- A30 Ugford to Burcombe: 1768m<sup>2</sup> of slurry seal (c£28,288\*)

\*2017/18 rates only!

## **Sites not meeting the criteria:-**

- Sutton Road Fovant – Reported profile issue: Found to be within acceptable limits
- Upper High Street Tisbury – Natural Stone Slabs: Too small an issue for this initiative – may be able to be addressed by the local minor masonry gang
- The Cross Tisbury – Areas of unevenness too localised for this initiative
- Warminster Road South Newton – Responsibility of Highways England, not WC
- South Newton Trading Estate to Bonham Bridge – Not a highway adopted footway
- Ferndale Cottage to The Street East Knoyle – Not a highway adopted footway

## **Site not yet assessed due to late submission:-**

- Hindon Road Dinton Adj to primary school: Will be assessed in due course and added to any rolling list, should that be found appropriate



<b>Report to</b>	South West Wiltshire Area Board
<b>Date of Meeting</b>	07/02/2018
<b>Title of Report</b>	Community Area Grant funding

**Purpose of the report:**

To consider the applications for funding listed below

<b>Applicant</b>	<b>Amount requested</b>
<b>Applicant:</b> Quidhampton Village Hall Committee <b>Project Title:</b> Quidhampton Village Hall Roof Repairs and Damp-Proofing  <a href="#">View full application</a>	£1200.00
<b>Applicant:</b> Tisbury and District Community Minibus Limited <b>Project Title:</b> Move TISBUS to the Nadder Campus  <a href="#">View full application</a>	£280.00
<b>Applicant:</b> Cranborne Chase Area of Outstanding Natural Beauty <b>Project Title:</b> Access development - Volunteer facilitation fund  <a href="#">View full application</a>	£750.00

**1. Background**

Area Boards have authority to approve Area Grants under powers delegated to them. Under the Scheme of Delegation Area Boards must adhere to the [Area Board Grants Guidance](#)

[The funding criteria and application forms](#) are available on the council's website.

**2. Main Considerations**

2.1. Councillors will need to be satisfied that funding awarded in the 2017/2018 year is made to projects that can realistically proceed within a year of it being awarded.

2.2. Councillors must ensure that the distribution of funding is in accordance with the Scheme of Delegation to Area Boards.

2.3. Councillors will need to be satisfied that the applications meet the Community Area Board grants criteria.

**3. Environmental & Community Implications**

Grant Funding will contribute to the continuance and/or improvement of cultural,

social and community activity and wellbeing in the community area, the extent of which will be dependent upon the individual project.

#### 4. Financial Implications

Financial provision had been made to cover this expenditure.

#### 5. Legal Implications

There are no specific legal implications related to this report.

#### 6. Human Resources Implications

There are no specific human resources implications related to this report.

#### 7. Equality and Inclusion Implications

Community Area Boards must fully consider the equality impacts of their decisions in order to meet the Council's Public Sector Equality Duty.

Community Area Grants will give local community and voluntary groups, Town and Parish Council's equal opportunity to receive funding towards community based projects and schemes, where they meet the funding criteria.

#### 8. Safeguarding Implications

The Area Board has ensured that the necessary policies and procedures are in place to safeguard children, young people and vulnerable adults.

#### 9. Applications for consideration

Application ID	Applicant	Project Proposal	Requested
<a href="#">2709</a>	Quidhampton Village Hall Committee	Quidhampton Village Hall Roof Repairs and Damp-Proofing	£1200.00
<p><b>Project Description:</b> We have had a building-survey carried out by Stephen Linard FRICS MCI Arb of Wilton who recommends urgent work is necessary as follows 1. Maintenance of roof-slates. 2. Installing an external pea-shingle drain adjacent to front wall. 3. Clearing of vegetation to facilitate gutter efficiency.</p> <p><b>Input from Community Engagement Manager:</b> The applicant reports that the residents of Quidhampton who use the Hall for social functions will benefit from this project. Attendees of Public meetings including Parish Council meetings also use the building.</p> <p>This is a capital project and the applicant has committed to paying 50% of the project cost, meeting the community area grant criteria.</p>			
<p><b>Proposal</b> That the Area Board determines the application.</p>			

Application ID	Applicant	Project Proposal	Requested
<a href="#">2675</a>	Tisbury and District Community Minibus Limited	Move TISBUS to the Nadder Campus	£280.00
<p><b>Project Description:</b> TISBUS is moving from its current location at the Council garages on Queens Road Tisbury to the area next to the new Nadder Community Centre and Campus. This is at the request of the Parish Council and local people to help resolve local parking issues. The new area is suitable but needs expenditure to ensure security safety and utility. This move will involve TISBUS in expense including new security lockssignage and lighting. All costs are quoted as estimates but the overall cost will be no more than that requested.Full invoices will be forwarded when the move is complete.</p> <p><b>Input from Community Engagement Manager:</b> The applicant advises that the proposed move will help alleviate the parking pressure in part of the village. The new premises will be for the convenience of all the drivers and the increased efficiency of the Company. It will indirectly also benefit their travelling members and other passengers.</p> <p>At the time of completing this application, further proposed works are being costed to increase the security of the proposed move. An update will be provided at the meeting by the applicant and the Community Engagement Manager to advise of any additional requested funding.</p>			
<p><b>Proposal</b> That the Area Board determines the application.</p>			

Application ID	Applicant	Project Proposal	Requested
<a href="#">2660</a>	Cranborne Chase Area of Outstanding Natural Beauty	Access development - Volunteer facilitation fund	£750.00
<p><b>Project Description:</b> We wish to apply for 750 to help cover volunteer costs for surveying new routes throughout the Chalke Valley to include in plans for capital and marketing investment as part of a 2M Landscape Partnership Scheme from Spring 2019. Work will be undertaken primarily by Southern England Disabled Ramblers group identifying short circular loops to take in the areas amazing views local archaeology and wildlife. The fund is intended purely to cover volunteers out of pocket expenses and we expect at least 4 disabled rambler routes to be researched identified and tested at least 4 short mobility friendly routes to star-gazing points wildlife and archaeology features 4 short walks to encourage families of all abilities 2.5 to 3 mile routes 2 cycle routes and at least 3 three dementia routes throughout the valley and in this area of South Wiltshire that includes the Chalke Valley Tollard Royal and Fovant. These routes will also heavily promote local services pubs community shops etc in the area to use in conjunction with a visit.As part of the investment in these routes Heritage Lottery Funding will be used to put in place all capital and marketing work to provide the resulting routes. We are hoping to sign up a number of partners and volunteer groups to agree to</p>			

monitor and maintain the routes into the future. Although this investment may not be matched until spring 2019 with capital work a considerable time of our Development Officer will be invested to support the volunteers in working up these routes and negotiating additional arrangements with landowners. This will include at least 1600 of development officer time transport and support costs e.g. printing mapping.

**Input from Community Engagement Manager:**

The applicant reports that those to benefit from the scheme include:

- a range of people with limited mobility for new tramper routes.
- dementia routes for individuals local groups and their carers.
- families and people of all ages for circular walks.
- short walks to stargazing points and cycle routes for all ages and abilities.

The routes will be heavily marketed to people living in local communities on the doorstep and visitors or tourists to the area.

This is a revenue project and it is proposed that any award of funding is taken from the Health and Wellbeing Budget allocation.

**Proposal**

That the Area Board determines the application.

No unpublished documents have been relied upon in the preparation of this report

**Report Author:**

Stephen Harris  
Community Engagement Manager  
01722 434211  
[Stephen.Harris@wiltshire.gov.uk](mailto:Stephen.Harris@wiltshire.gov.uk)



Report to	South West Wiltshire
Date of Meeting	07/02/2018
Title of Report	Community Youth Grants

### 1. Purpose of the report:

To ask Councillors to consider the following applications seeking funding from the South West Wiltshire Area Board.

Application	Grant Amount
<b>Applicant:</b> Seeds 4 Success <b>Project Title:</b> Friday Night Drop-Ins	£5000.00
<b>Total grant amount requested at this meeting</b>	£5000.00
<b>Total amount allocated so far</b>	£5872.00

### 2. Main Considerations

Councillors will need to be satisfied that grants awarded in the 2017/18 year are made to projects that can realistically proceed within a year of the award being made.

Area Boards have authority to approve Area Grants under powers delegated to them by the Cabinet member for Communities, Campuses, Area Boards, Leisure, Libraries and Flooding. Under the Scheme of Delegation Area Boards must adhere to the Area Board Grants Guidance 2017/2018.

Community Youth Grants will contribute to the continuance and/or improvement of cultural, social and community activity and wellbeing in the community area, the extent and specifics of which will be dependent upon the individual project.

Community Youth Grants give all local community and voluntary groups, Town and Parish Councils an equal opportunity to receive funding towards community based projects and schemes.

### 3. The applications

<b>Applicant:</b> Seeds 4 Success <b>Project Title:</b> <a href="#">Friday evening drop-ins</a>	Amount Requested from Area Board: £5000.00
This application meets grant criteria 2017/18.	
<b>Project Summary:</b> Following the success of our peer led monthly junior youth club there has been an increase in new young people wanting to access our Friday Night Drop-In session as they reached year 7. After consultation with our older members we agreed to pilot a new Friday evening model where some peer leaders were engaged in helping to deliver	

a junior drop in session between 630 and 830pm for those in school years 7-9 and we run a senior drop in session for school years 9 and up from 830-1030pm with transport provided from across SSW.

**Please tell us WHO will benefit and HOW they will benefit from your project and benefit your local community:** A range of young people from across South West Wiltshire will benefit from this project many of whom come from low income households are socially deprived have additional needs or are facing multiple challenges in their lives. During the pilot phase of this project we have seen 439 different attendances at these sessions reaching 79 different young people. We provide transport to the sessions to enable those who are isolated to access the project and we know that for some of these young people this is the only way they would be able to access these opportunities. By providing transport from across South West Wiltshire we go as far out as Wilton on alternate weeks we are enabling young people to form different friendship groups and develop new relationships. Young people learn new skills and develop socially through attending sessions and in our annual user survey 93 of young people said they had made new friends through attendance at sessions and 85 said their confidence and self-esteem had improved. Older members are encouraged to develop their leadership skills through helping out with the junior sessions this also develops them as individuals taking on additional responsibility within other sessions and the support of the charity as a whole. Since September 2017 there have been 11 older members been involved in supporting the delivery of the junior sessions increasing their confidence and developing their leadership skills. These young leaders become excellent role models for the juniors demonstrating the success of youth work and forming appropriate and positive relationships with the younger members as they are encouraged to access other aspects of Seeds4Success programme. These drop in youth work sessions are often the first point of contact for young people with Seeds4Success where they can build trusting relationships with the youth work staff and learn about the other youth work opportunities the charity offers. Through providing a safe and welcoming space young people feel relaxed and develop confidence to speak to staff and their peers about issues affecting their lives.

**Report Author:**

Steve Harris, South West Wiltshire Area Board  
01722 434211